

# RECOVERY LESSONS: 2017 TUBBS FIRE & 2018 CAMP FIRE

KEVIN PHILLIPS, TOWN MANAGER, TOWN OF PARADISE.

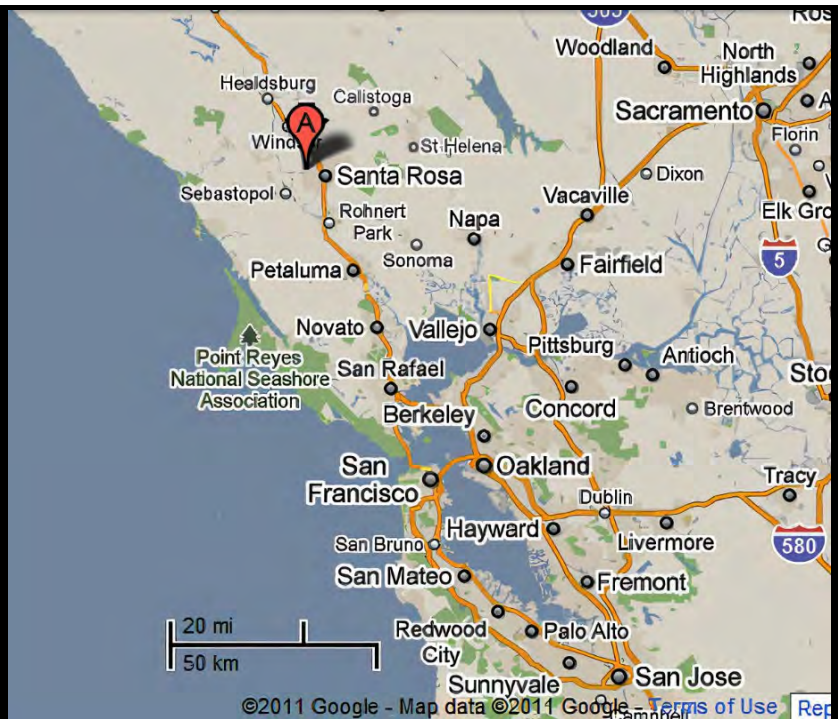
SEAN MCGLYNN, FORMER CITY MANAGER, CITY OF SANTA ROSA

COLETTE CURTIS, RECOVERY & ECONOMIC DEVELOPMENT DIRECTOR, TOWN OF PARADISE



## CITY OF SANTA ROSA

- Incorporated in 1867
- Population of 178,127
- Located 50 miles north of San Francisco, CA
- 42 square miles of land
- Median age of 36.7
- Median household income \$80,472 (CA average \$78,672)



## 2017 TUBBS FIRE

Started at 9:45 p.m. on October 8, 2017 near Highway 128 and Bennett Lane in Calistoga, CA (SRA)

Daytime temperatures in the mid 80's

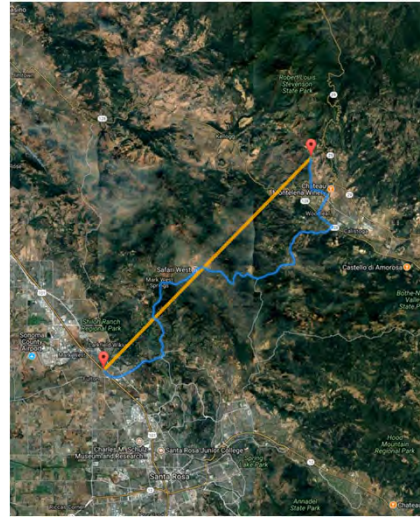
- Moderate east winds

Nighttime temperatures did not predictably recover

- Sustained winds increased to 45 mph
- Gusts estimated at 75 to 90 mph on windward slopes

Fire travelled 12 nautical miles to the Santa Rosa City limits in 3+ hours

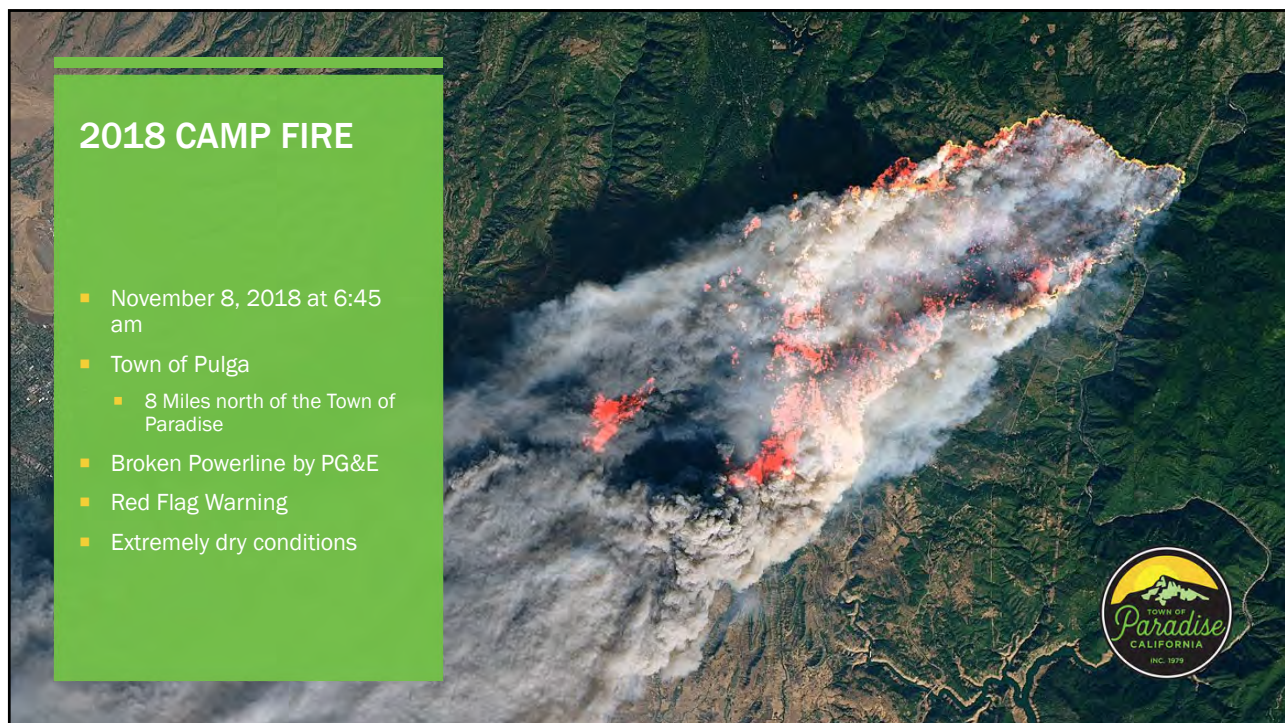
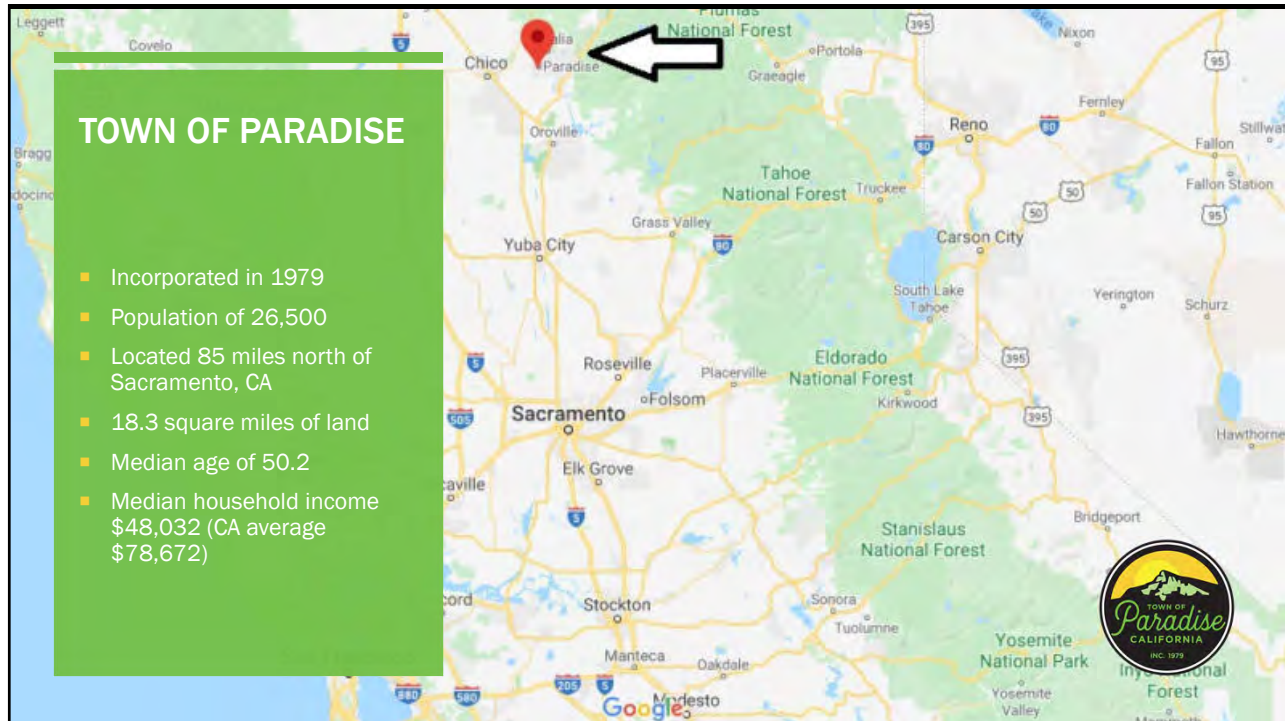
Fire did not spread linearly, rather it spread in multiple directions simultaneously impacting several City neighborhoods



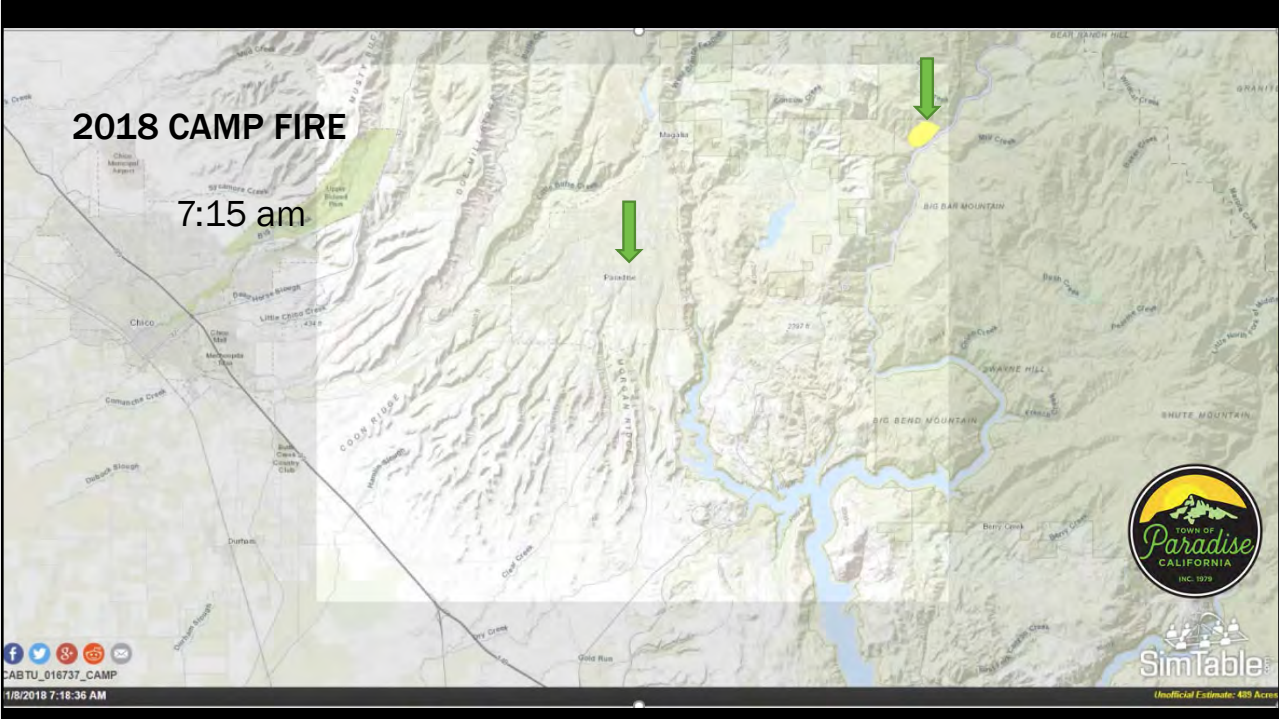
## 2017 TUBBS FIRE

- 36,087 Acres Burned
- Within the City Limits:
  - Fatalities - 9
  - Buildings Destroyed - 3,098
    - Single Family Homes - 2,668
    - Multifamily Homes - 209
    - Mobile Homes - 190
    - Commercial Buildings - 31
  - 5% of housing stock lost
  - 25% of hotel inventory lost

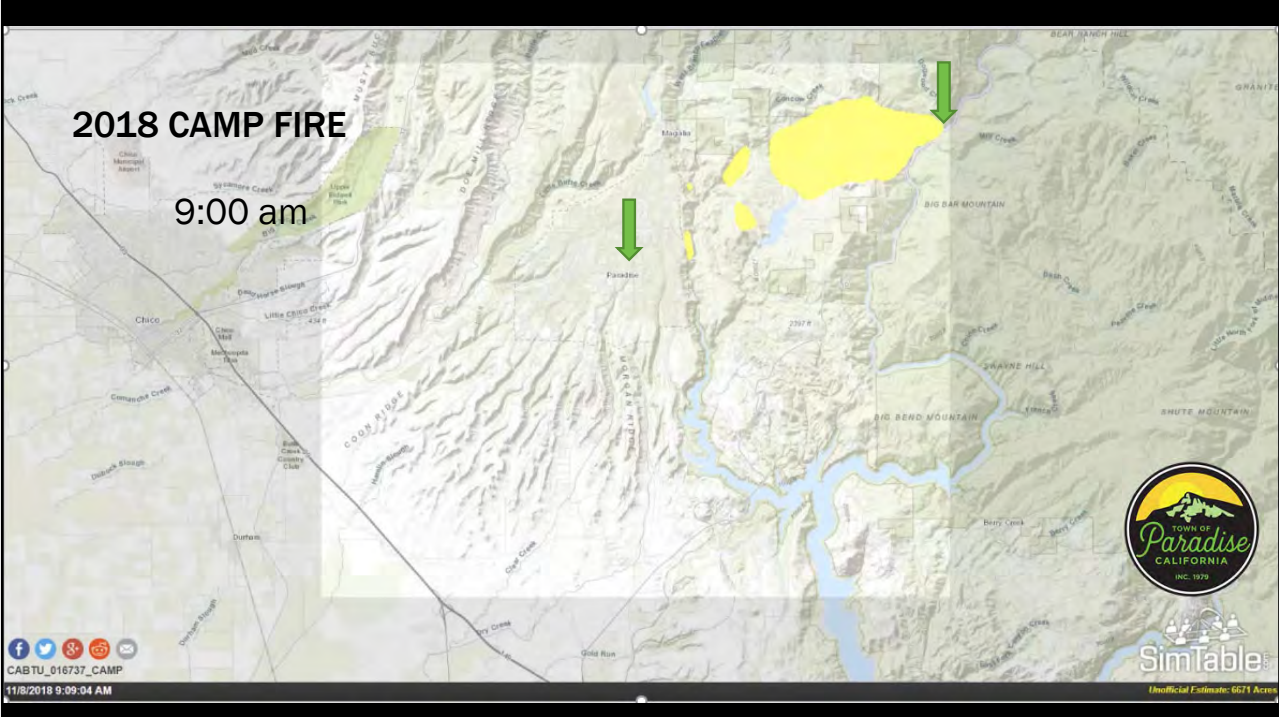


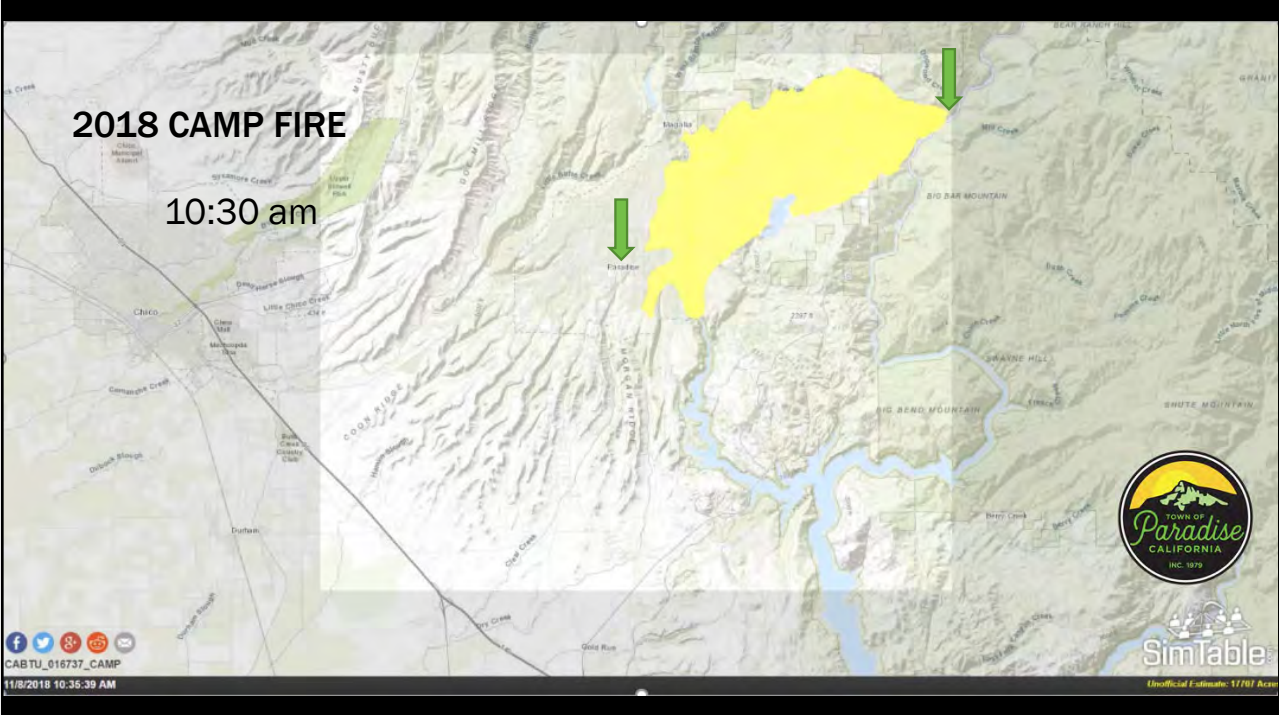




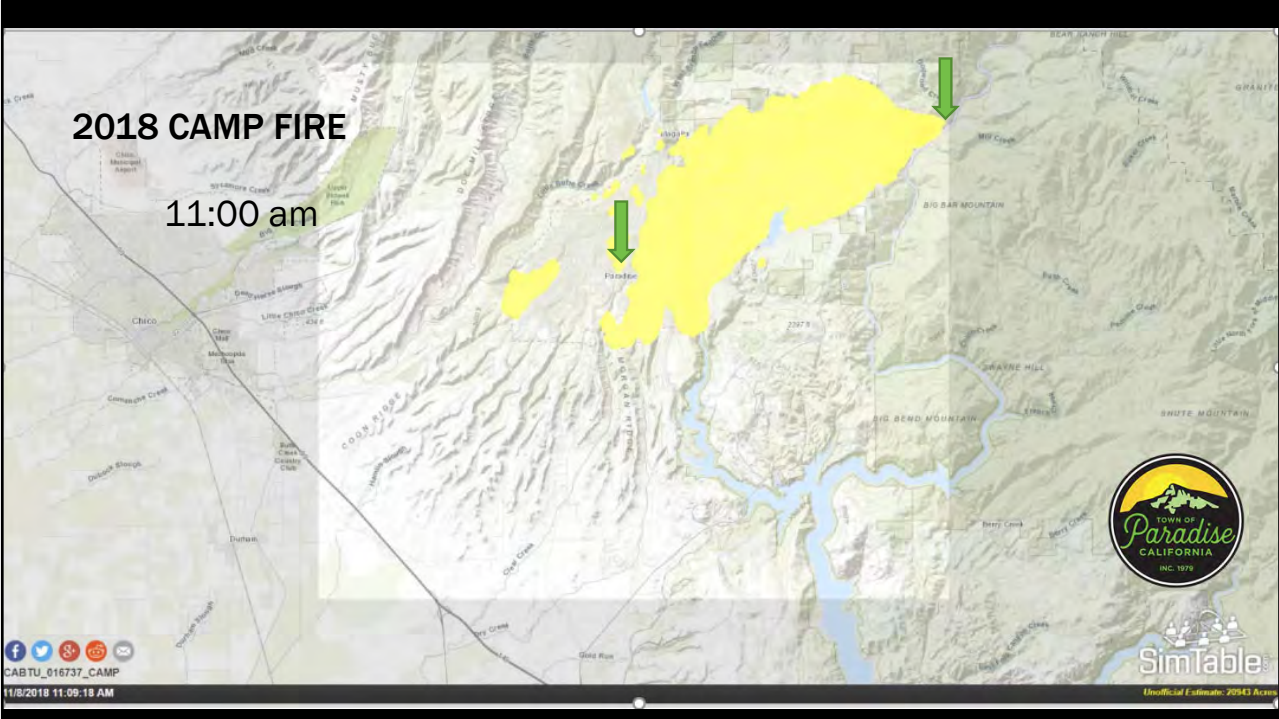


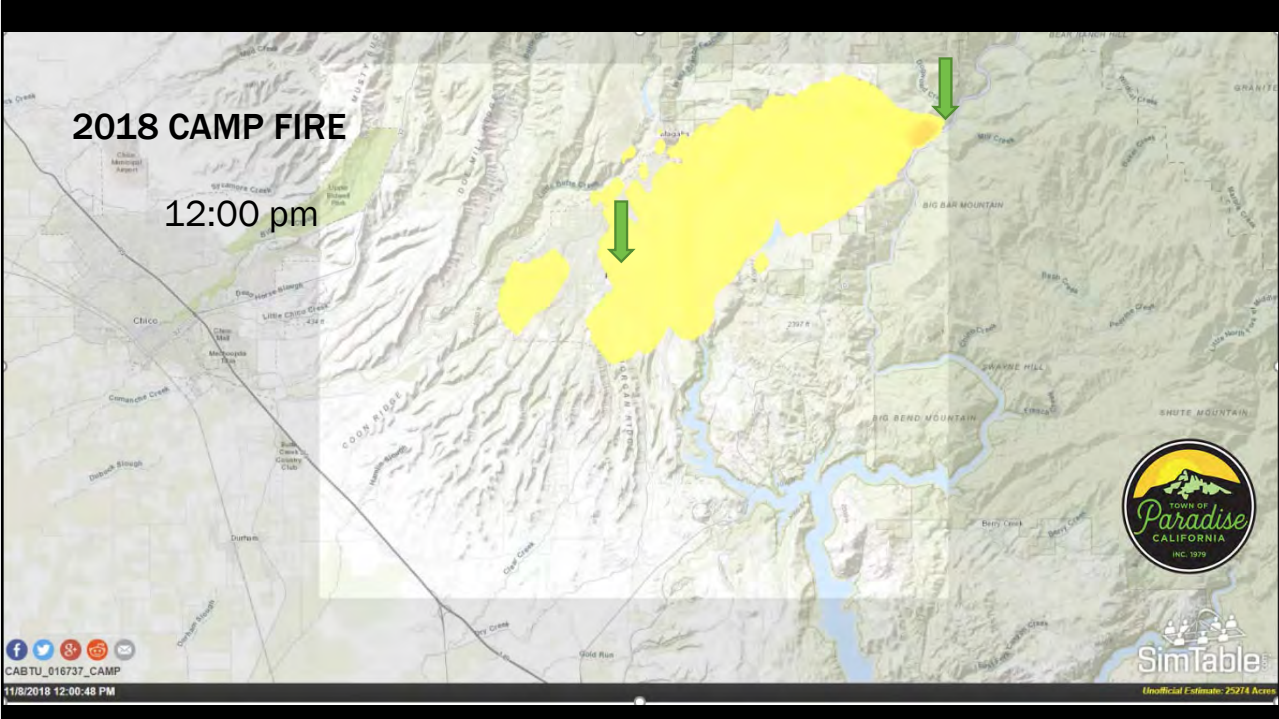




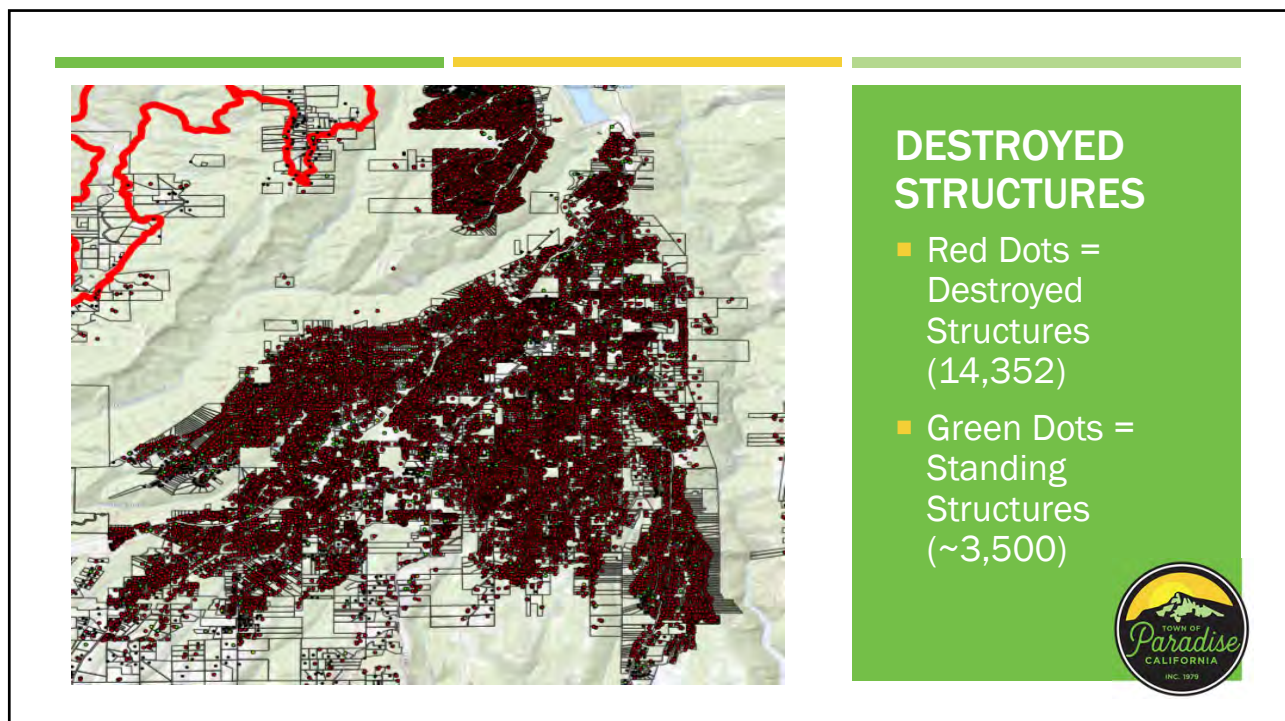
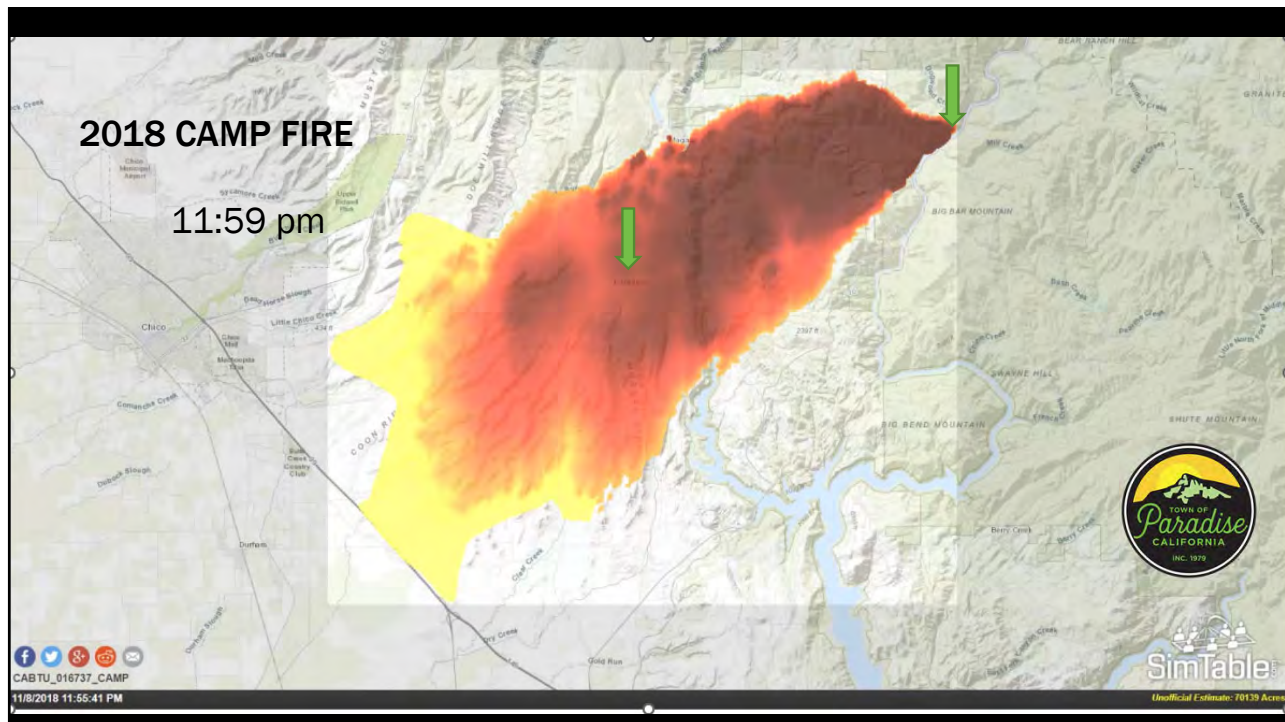




















## RECOVERY TUBBS FIRE

### LEANING INTO RECOVERY EARLY

#### Look Ahead

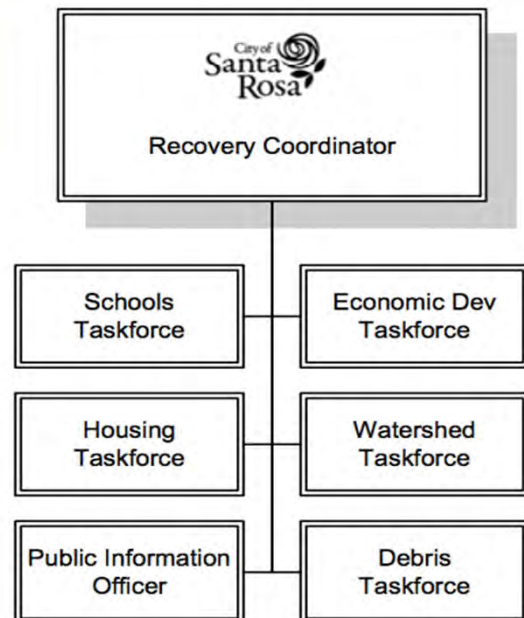
- Planning for recovery while still in emergency response mode

#### Asking Essential Questions

- What is the nature of the recovery

#### Organizational Structure

- City Manager designated recovery lead
- Internal staff take on recovery roles
- Supplemented with outside assistance from consultants





## COUNCIL SUPPORT

### Urgency Ordinances adopted by City Council to expedite rebuilding process

- Expedites review for hillside development & design review
- Waives fees for discretionary planning, demolition and temporary housing permits
- Allows residents to live in temporary housing, (RVs, tiny homes, etc.) on their property while rebuilding
- Incentivizes construction of new ADUs; allows residents to build detached ADUs to live in while rebuilding main residence

### Resilient City Permit Center

- Council approved expedited contract for outside firm to operate separate permit center exclusively for fire survivors rebuilding homes and/or businesses
- Permit center opened November 28, 2017



## COUNCIL SUPPORT

### Established Rebuild/Build Council Ad Hoc Committee

- Appointed members meet weekly with City recovery staff

### Weekly Fire Recovery & Rebuilding Updates

- Added as standing item on City Council weekly meeting agenda



## BENCHMARK PROGRESS

### Utilizing available technology, developed tools to track recovery efforts

- Tools are public facing
- Easily accessible to all staff, citizens, and members of the media



## REBUILD DATA TRACKER

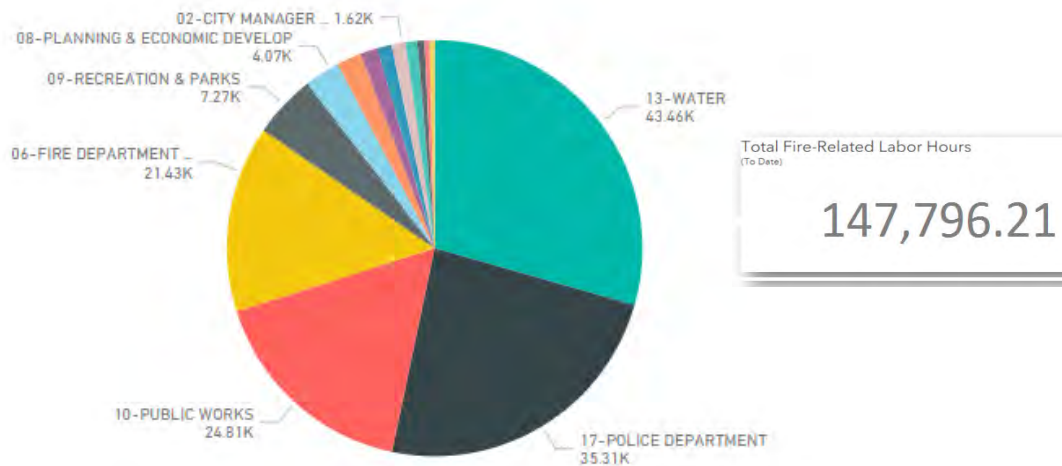
### Resilient City Fire Recovery Progress

This chart depicts the number of Residential Housing Units in each respective stage of the active permit process.





## EMPLOYEE RECOVERY TIME KEEPING DASHBOARD



## STREAMLINED PERMITTING PROCESS

Santa Rosa reaches out to property owners



## COMMUNITY OUTREACH

- Over 250 Rebuild & Recovery meetings
- Welcome Home Package



## CARING FOR YOUR OWN

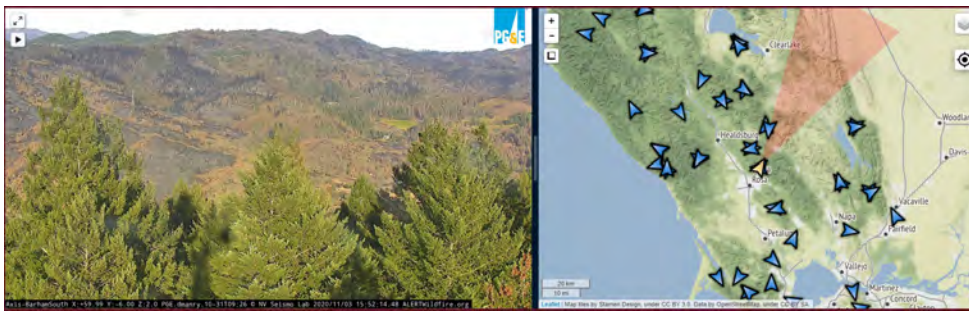




## EARLY DETECTION

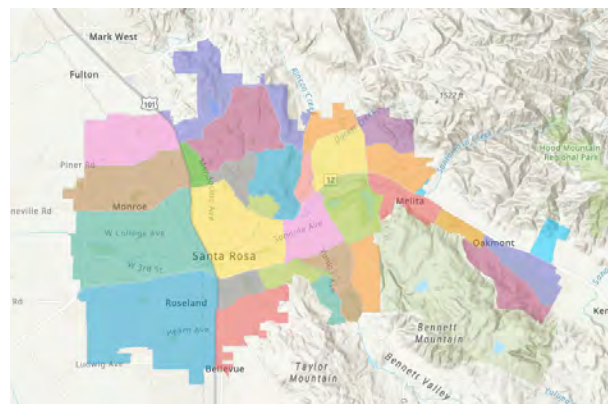
- Camera Network System:
  - [alertwildfire.org/northbay](http://alertwildfire.org/northbay)
- Remote Automated Weather Stations

Station	Time	RH	Wind	Duration	Temp	Fuel	Elev	Zone
Los Altos	9:10AM	19%	NE2G7mph	0:0	58	9	538	CA508
San Carlos	8:49AM	11%	N5mph	1:5	59	3		CA508
San Francisco	8:56AM	25%	E17mph	6:9	61	10		CA508
Palo Alto	9:47AM	20%	NE7mph	0:2	61	7		CA508
Oakland	9:53AM	8%	ESE6mph	7:12	66	3		CA508
Mountain View	6:56AM	14%	N2G30mph	3:5	55	33		CA508
Hayward	8:54AM	9%	E10mph	9:14	62	46		CA508
Oak Ridge	9:33AM	9%	NNE12G25mph	7:13	60	8	1895	CA507
Atlas Peak	9:29AM	10%	NNE10G32mph	10:18	54	7	1934	CA507
Middle Peak	9:36AM	9%	NNW14G23mph	13:14	52	8	2339	CA507
Big Rock	9:33AM	6%	SE8G17mph	6:14	62	7	1500	CA507
Woodacre	9:51AM	10%	ENE6G11mph	0:12	61	10	1400	CA507
Hanksville	9:56AM	5%	NNE16G35mph	18:18	57	7	2024	CA507
Barnaby	9:11AM	7%	NW4G7mph	0:11	61		810	CA507
Novato Fire	9:31AM	7%	N5G8mph	7:14	65	6	482	CA506
Petaluma	9:35AM	8%	SSW7mph	7:13	63	8	89	CA506
Novato	9:36AM	6%	N7mph	7:12	66	3		CA506
CalFire Portable 14	9:49AM	6%	NW5G16mph	2:17	65	6	280	CA506
Santa Rosa	9:28AM	6%	NE3G25mph	15:18	62	7	698	CA506
Santa Rosa	9:53AM	5%	NNE2G25mph	17:18	67		125	CA506
Napa	8:54AM	10%	VRB3mph	15:18	62	33		CA506
Olema Valley	9:13AM	56%		0:0	47	37		CA505



## ALERT/WARNING/PREPARATION

- Change in philosophy
  - Pre-positioning of resources
  - Controlled burns
- Alerting tools:
  - City access to IPAWS (WEA/EAS/NOAA)
  - SoCoAlert
  - Hi-Lo Sirens
  - (Nixle and Social Media)
  - [www.srcity.org/emergency](http://www.srcity.org/emergency)
- Early evacuations
- Pre-designated Evacuation Zones
  - [www.srcity.org/evacuation-zones](http://www.srcity.org/evacuation-zones)



---

## RECOVERY CAMP FIRE

---



### RECOVERY

- Immediately following the fire, infrastructure damage was concerning
- Town of Paradise the municipal corporation had just lost nearly all population and associated revenues for at least two decades
- Financial solvency was a top concern



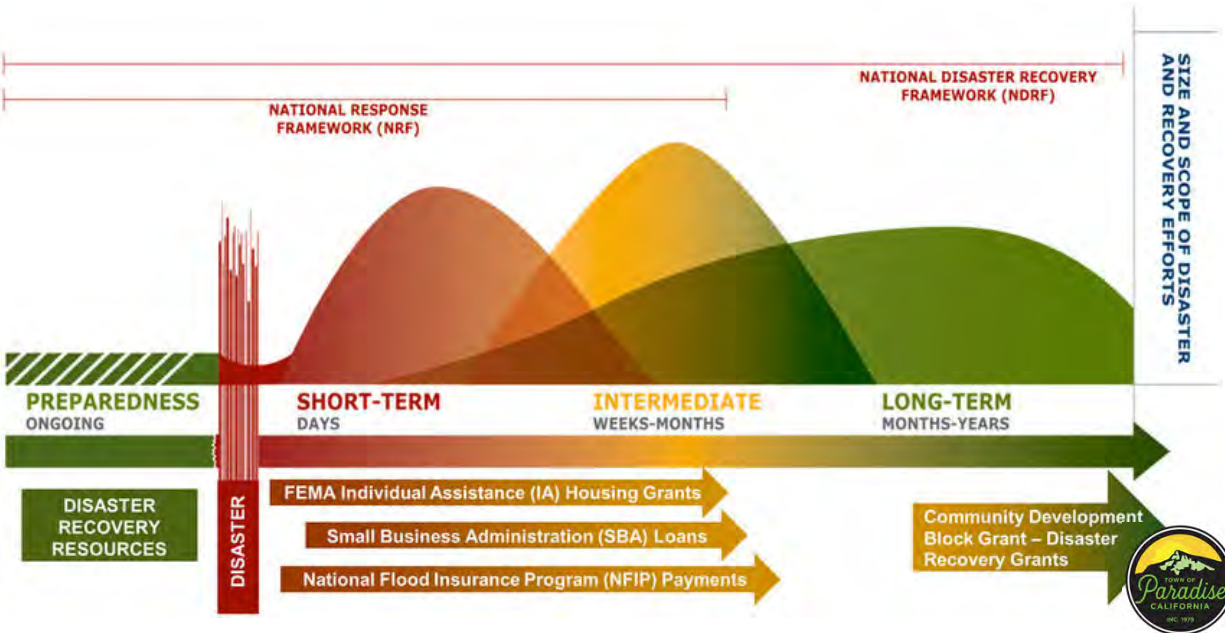


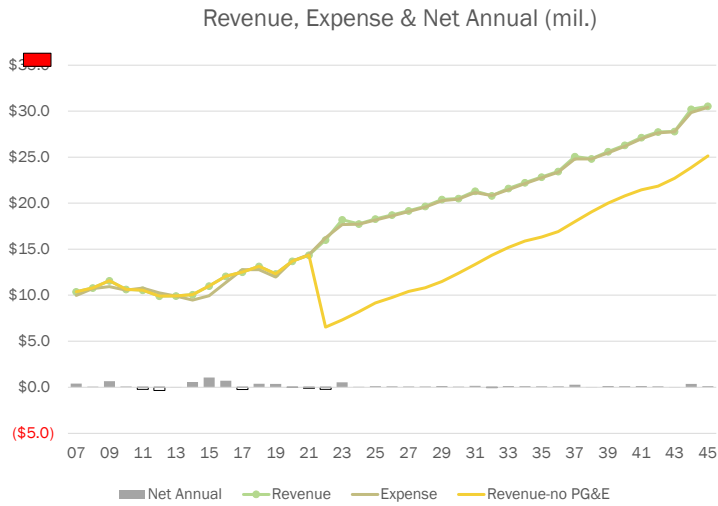


## WHERE DID EVERYONE GO?

- Following the Camp Fire, the Town of Paradise's population of 26,400 experienced an 82.6% loss.
- Chico gained 18.9% which is a decade of population growth in just a few weeks, Oroville gained 20.4%.
- Overall our County lost over 11,153 residents and estimates say it'll take until 2024 to restore pre-fire County population number.
- Survivors can be found in all 50 states across the US.

## RECOVERY TIMELINE - 15-20 YEAR RECOVERY OUTLOOK





## FISCAL SUSTAINABILITY

THE TOWN WAS ABLE TO SECURE \$219 MILLION FROM THE PG&E SETTLEMENT FUND.



## FEDERAL AND STATE ASSISTANCE

- Water System Repair
- Debris Removal
- Hazard Tree Removal
- Road Repairs







©2019 URBAN DESIGN ASSOCIATES

## QUICK PLANNING, FORWARD THINKING.

- Safer
- Better
- Stronger
- Welcoming
- Greener



©2019 URBAN DESIGN ASSOCIATES

- Drafting the Plan started in January 2019
- Extensive Community Outreach
- Adopted by the Town Council in June 25, 2019
- 18 Town-Led Projects and 22 Partner-Led Projects across all aspects of the Town's Recovery

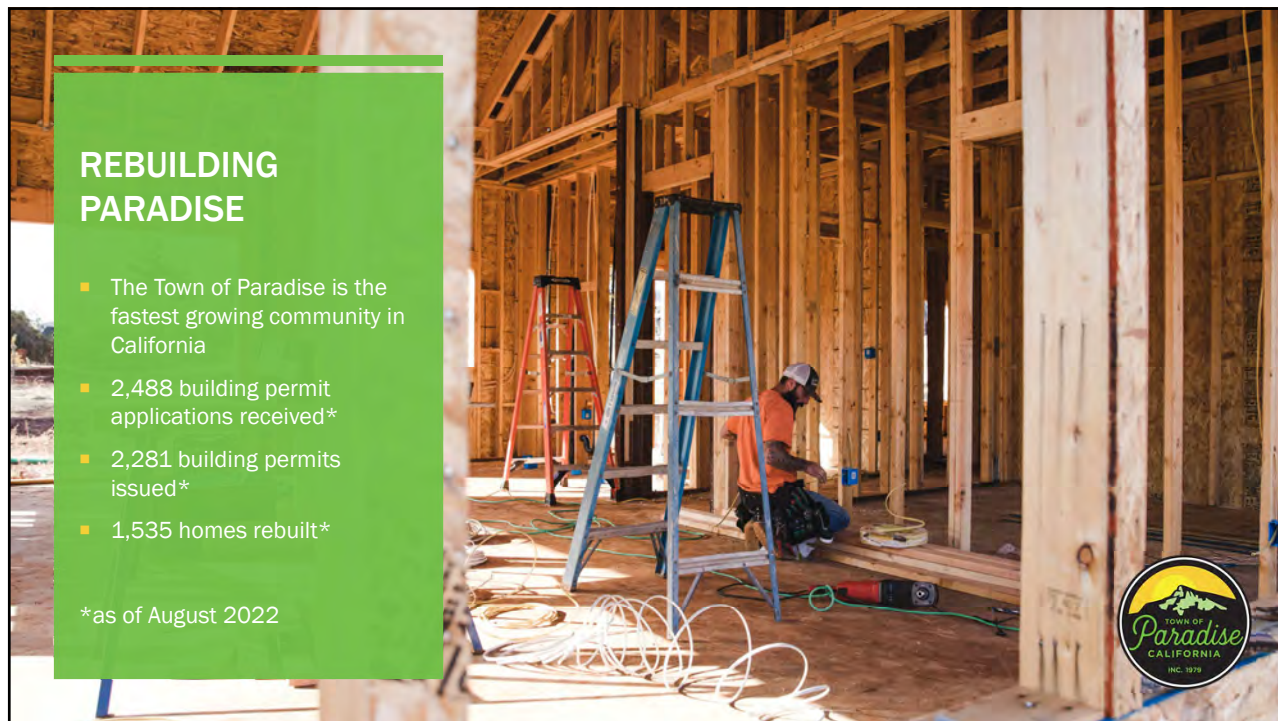
## BUILDING RESILIENCY CENTER



## REBUILDING PARADISE

- The Town of Paradise is the fastest growing community in California
- 2,488 building permit applications received\*
- 2,281 building permits issued\*
- 1,535 homes rebuilt\*

\*as of August 2022





## LESSONS LEARNED

- Employee Care
- Plan for the Worst
- Stress Test Insurance
- Communication
- Regional Partnerships



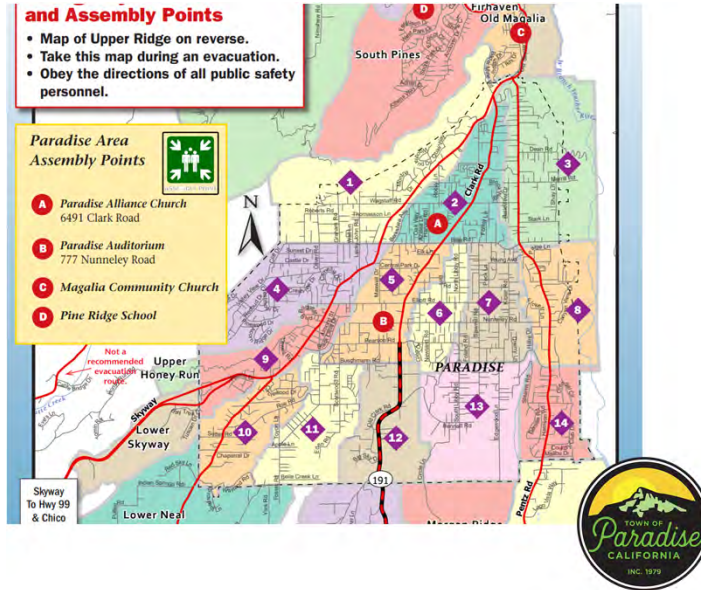
## EMPLOYEE CARE

- All Town Staff impacted
- Most lost homes
- Logistical/Housing issues
- Trauma



## PLAN FOR THE WORST

- The Camp Fire far surpassed our “worst case scenario”
- Plan for what you think is the worst that could happen, then multiply it by 10



## STRESS TEST YOUR INSURANCE

- Challenges with insurance
- Revenue Replacement
- Property Coverage





## COMMUNICATION

- Most important non-first responder function in an emergency
- Accurate and timely
- Hard to get it right
- Frequent, reliable, vetted
- Listening to each story



## REGIONAL PARTNERSHIPS

- 50,000 people evacuated within 6 hours on Nov. 8, 2018
- Challenges with inter-jurisdictional evacuations
- Surrounding counties received thousands of evacuees



## SO MUCH HAS BEEN ACCOMPLISHED

- 3.6 million tons of debris removed by Nov 2021
- First Rebuild permit issued March 2019
- Building Resiliency Center opened Jan 2020
- Hundreds of thousands of hazard trees removed
- \$93 Million received from FEMA and FHWA for road repair
- Transportation Master Plan Completed
- Rebrand of Town Seal and Marketing
- 350 businesses reopened
- Sustainable Fiscal Model created
- Sewer Environmental Impact Report in process
- Early Warning System construction funding awarded – out to bid now
- Walkable downtown project underway
- Undergrounding utilities underway (PG&E, Comcast and AT&T) to be completed 2025



## AND THERE'S SO MUCH LEFT TO DO!

- Sewer connection to City of Chico
- \$800 million in unfunded road projects
  - Connecting dead end roads
  - Improving Evacuation Routes
- Early Warning System Construction and implementation/education
- Roadway reconstruction of 30 miles per year
- Economic Recovery and Development Strategy
- Home Hardening Program
- Defensible Space Code Enforcement
- Category 4 Hazard Tree Removal
- Affordable Housing and Insurance
- Continue supporting residents rebuilding!





WE DIDN'T DO IT ALONE AND WE STILL AREN'T ALONE



THANK YOU!

