

**Impacts of COVID-19 and
Public Safety on Children:
*All Children Thrive is Part of the
Solution***

A decorative graphic in the bottom right corner consisting of several overlapping circles. One is a solid dark blue circle, another is a solid light blue circle, and a third is a dark blue circle with a white outline. They are arranged in a cluster, partially cut off by the right edge of the slide.



OUTLINE

- COVID-19 and it's Disparities
- Public Safety and Police Brutality
- ACT-CA: Part of the Solution

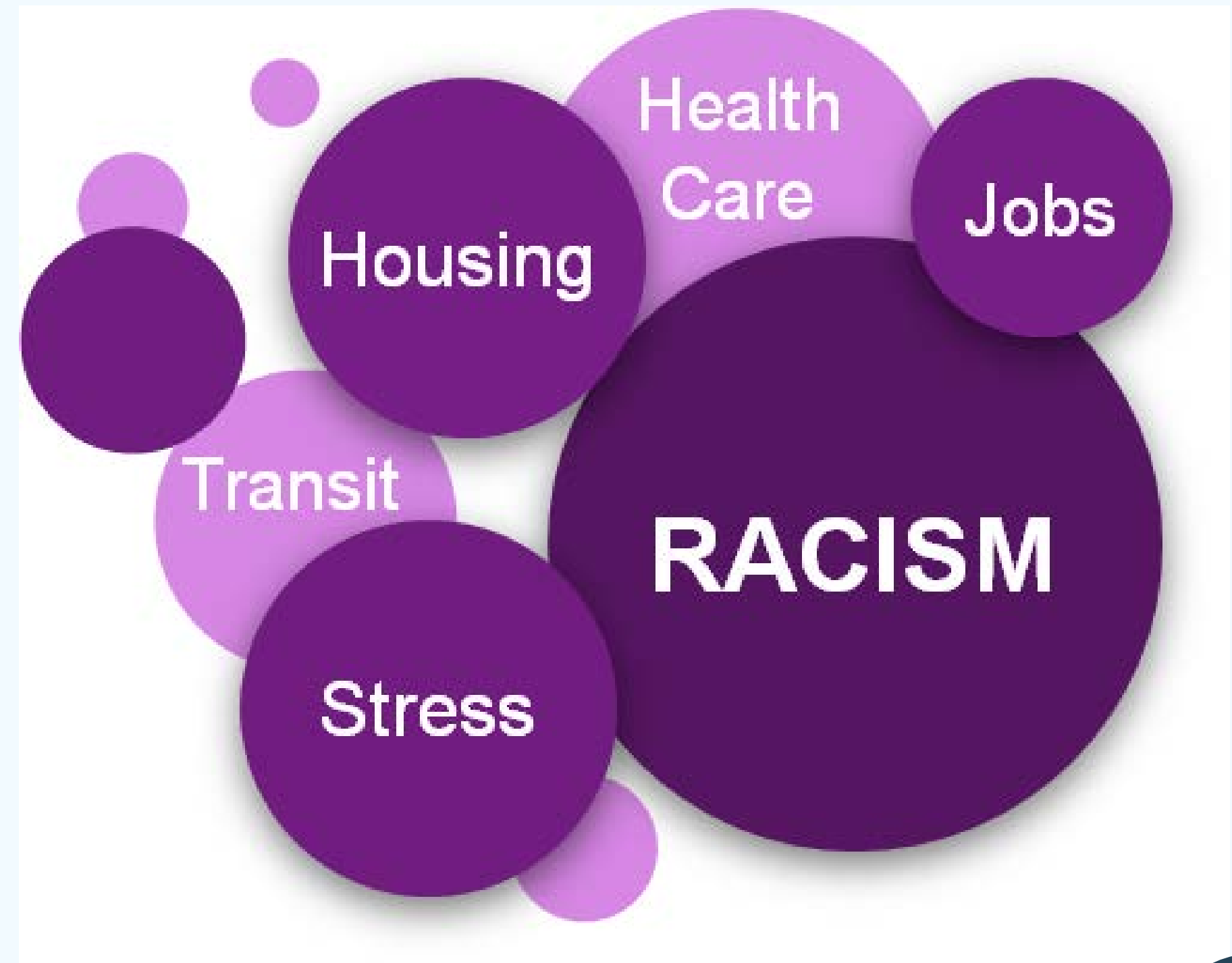
OUR CURRENT REALITIES



- Reality #1:
 - COVID-19 is negatively impacting children, particularly those most vulnerable
 - COVID-19 has affected individuals and communities unequally -- exacerbated by pre-existing inequities
- Reality #2:
 - Children and families are living in the midst of one of the biggest racial uproar in recent history
 - Children of color have been re-traumatized by witnessing constant police brutality against African Americans

COVID - 19 DISPROPORTIONALITY IN BLACK AND LATINX COMMUNITIES

- Entirely explained by structural racism
- Historical and ongoing cycle driven by social determinants of health
- Results in:
 - Increased risk for infection
 - Increased risk for complications



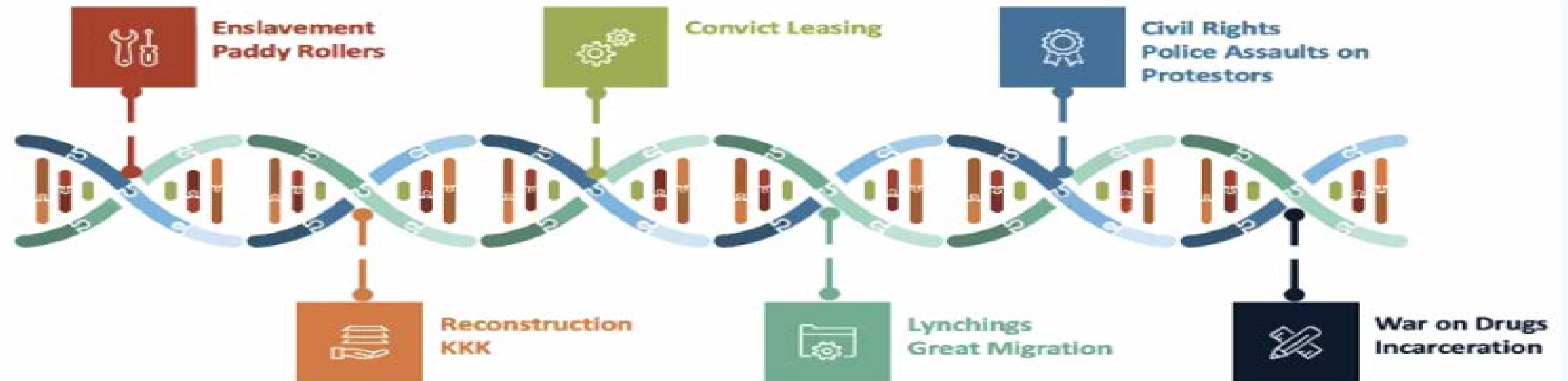
THE TITANIC

“We are in this
together”



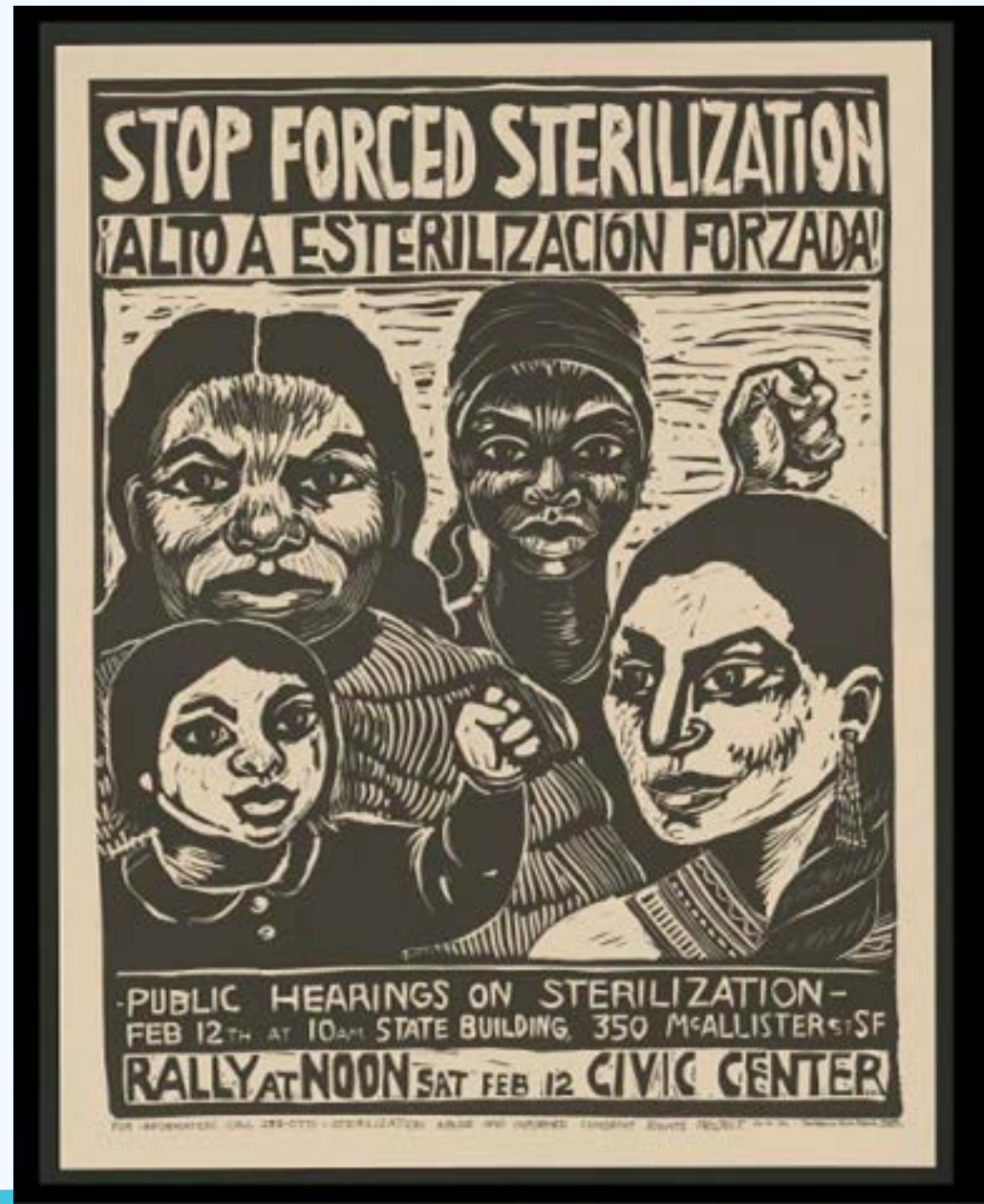
- Sure, but...
 - More 3rd class passengers died than 1st class passengers
 - Men died more than women and children
 - 1st class women were most likely to survive compared to 3rd class men

Uninterrupted History Timeline of Over Policing Black People – America's DNA

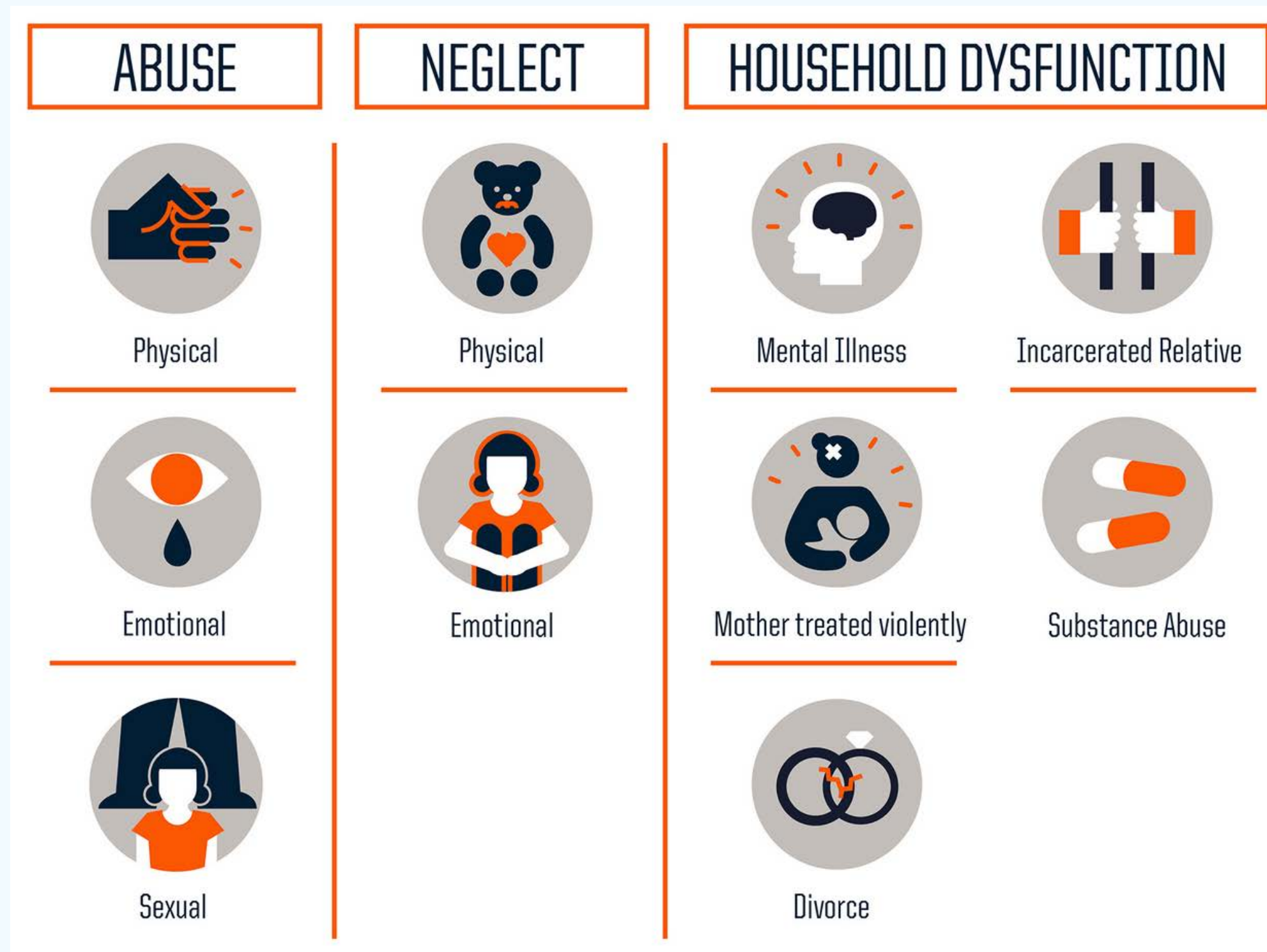




OTHER COMMUNITIES IMPACTED BY STRUCTURAL RACISM



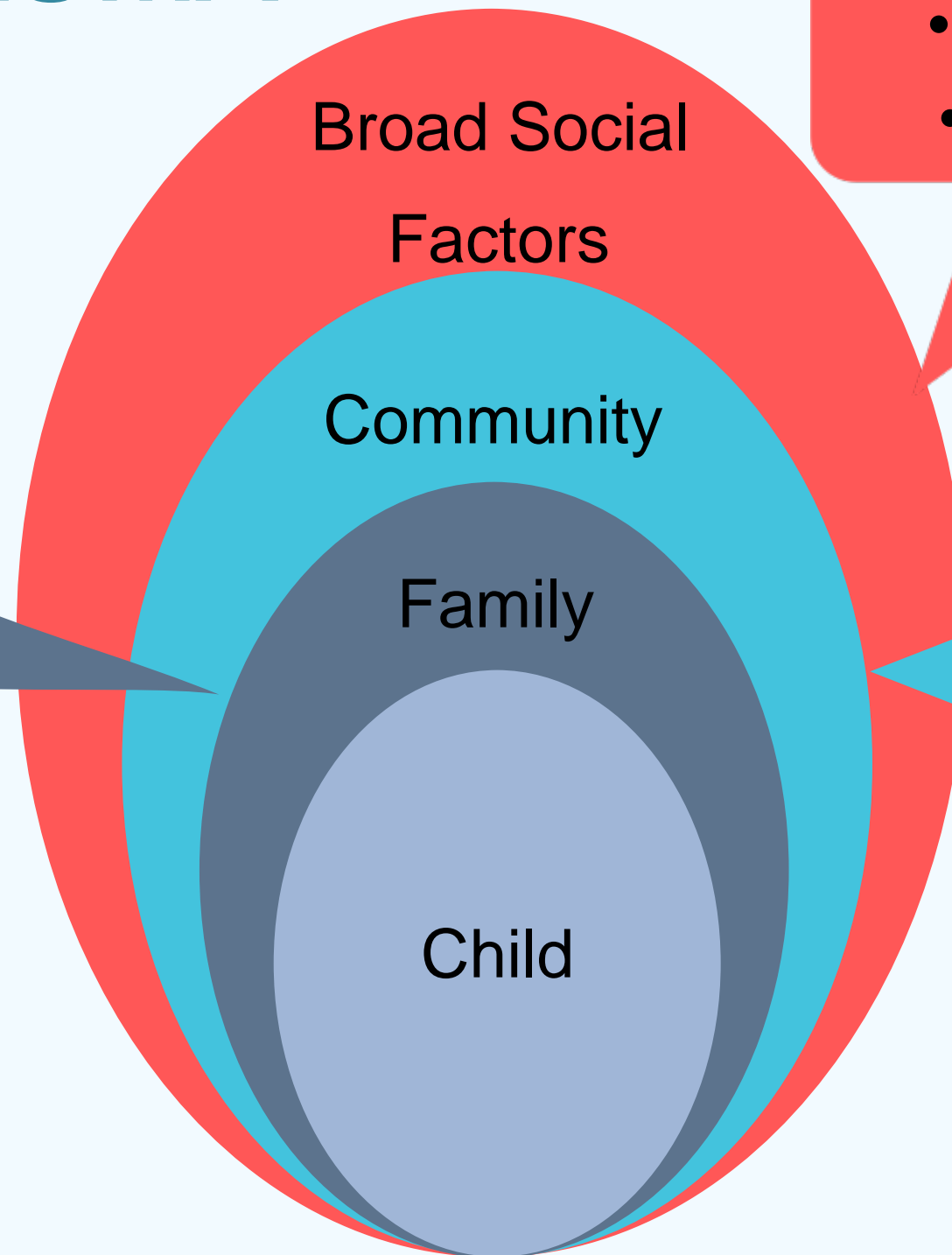
ADVERSE CHILDHOOD TRAUMAS (ACEs)



OTHER SOURCES OF CHILDHOOD TRAUMA

DIRECT TRAUMA

- Physical, sexual, and emotional abuse and neglect
- Witness to domestic violence
- Parental alcohol/drug abuse, mental illness
- Loss of caregiver from death, divorce, and imprisonment



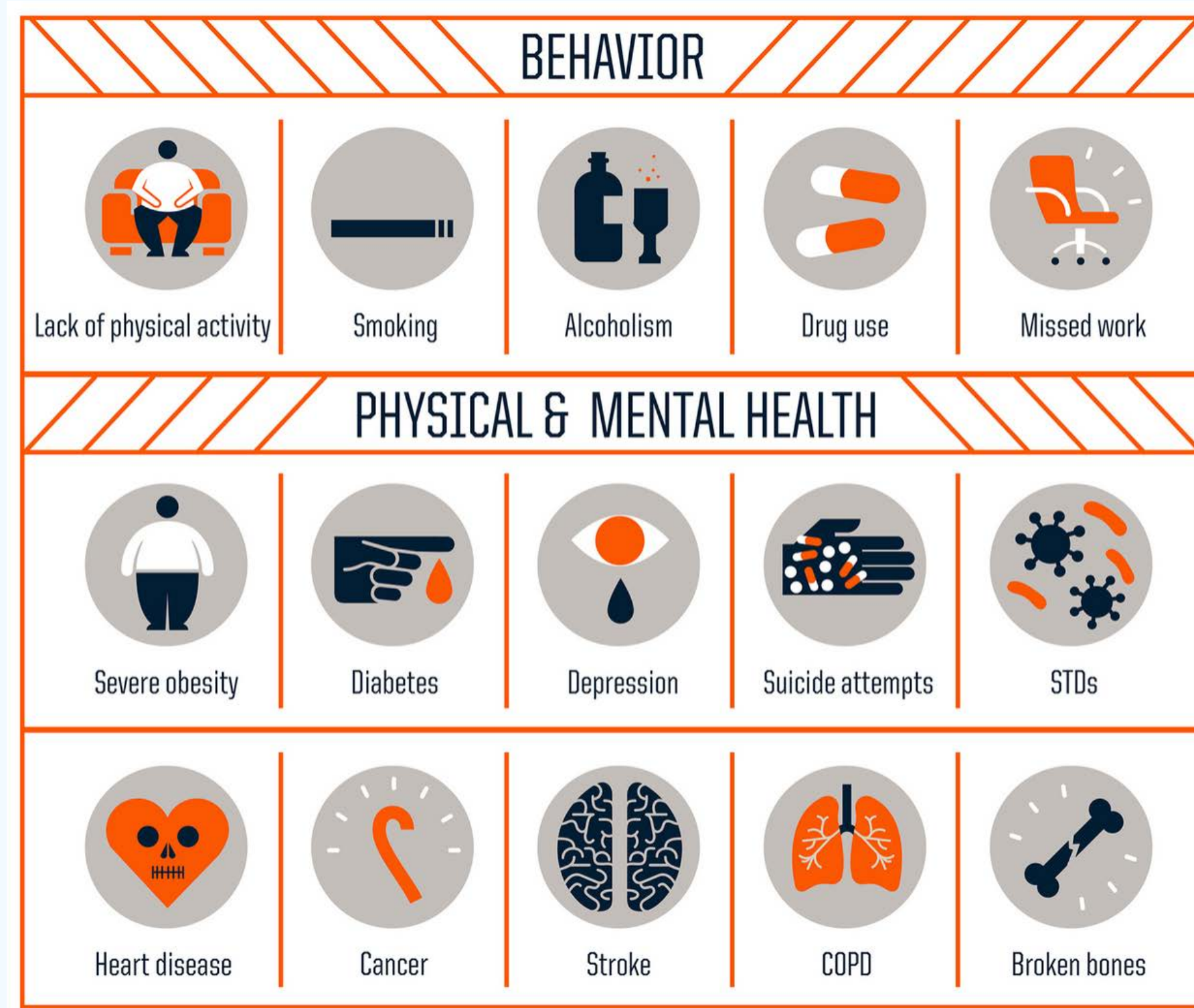
GENERATIONAL TRAUMA

- Personal/Structural Racism
 - Concentrated Poverty
 - Lack of Social Support
 - Forced Displacement

COMMUNITY TRAUMA

- Witness to Police Brutality
- Witness to violence/threat
- Lack of safe housing
- Community Disinvestment

IMPACTS OF CHILDHOOD TRAUMA



Source: Robert Wood Johnson

Foundation



ALL CHILDREN THRIVE CALIFORNIA (ACT/CA)

A one-time allocation of \$10 million in Proposition 63 administrative funds to prevent adverse childhood experiences, counter their effects, promote healing, and foster individual and community resilience to give all California children the opportunity to thrive.



**PUBLIC HEALTH
ADVOCATES**



**CENTER FOR HEALTHIER CHILDREN,
FAMILIES & COMMUNITIES**



Community
PARTNERS®



California Department of
PublicHealth

WHAT IS ACT -CA?

All Children Thrive – California is a community-led movement that:

- Transforms current systems to improve child and family well-being.
- Connects resident, community, and youth voices to city officials, caregivers, healthcare workers, educators, and service providers to align policies, programs, and resources.
- Builds networks of people and places co-designing innovative solutions and sharing their learning to help all of California's children thrive.



ALL CHILDREN THRIVE - CALIFORNIA

What is ACT-CA?

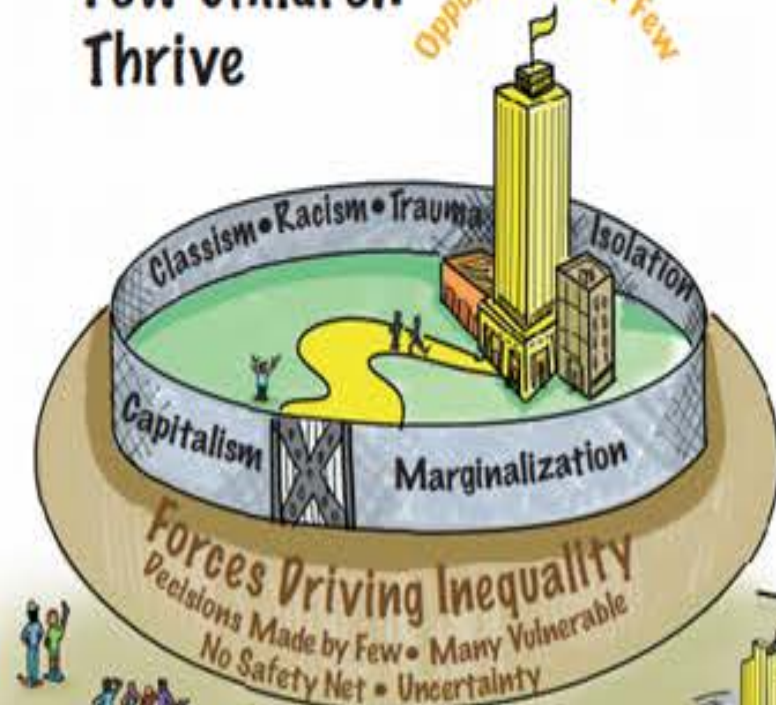
ACT-CA is a community-driven movement where leaders, youth and community, work side-by-side. Together, we create policies, programs and resources to transform cities into places and spaces where all children thrive.

Guiding Principles

- Children, youth & families center our work
- Prioritizing youth & community leadership
- Elimination of Inequitable Systemic Barriers
- Building relationships and trust
- All teach -- All learn
- Focused on Improvement and Sustainability

● CURRENT STATE: Few Children Thrive

Opportunity For Few



- Community Resistance & Resilience
- Cultural Values • Social Cohesion
- Grassroots Leadership • Courage

Destruction of Tower

● TRANSFORMATION PROCESS

Powershift

Mindshift

A. ENGAGE

- Shared vision and purpose
- Joint leadership
- Community-led assessment

B. GROW

- Cross-Sector Learning Networks
- Advocacy support for communities
- Change Package support



C. ACCELERATE

- Rapid sharing via Learning Networks
- Community-led evaluation
- Data Dashboard
- Sustainability practices keep work going

Reconstruction of Tower into Platform For All

● NEW ^{Transforming} FUTURE: All Children Thrive



Youth Development Department. Alternatives to Criminalization

Affordable Housing

Supported Families, Safe Spaces for Youth & Families

Healing

Community Redesigned

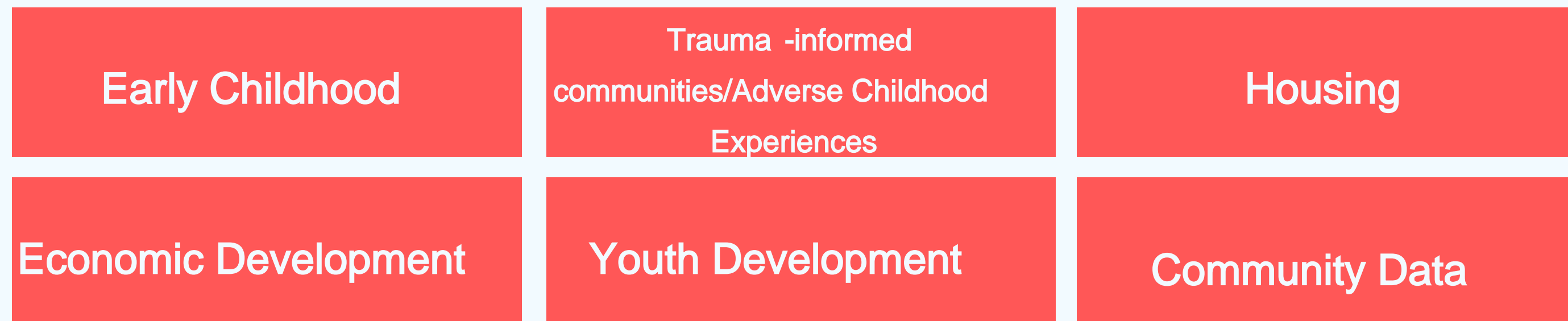
Loving Adults & Mentors

Youth Activities

THE WHAT:

- Building networks of people and places across the state that are working together to identify solutions that transform systems shaping child wellbeing
- Bringing together residents, youth, city officials and community leaders who know their cities best to co-design solutions
- Healing the adversities affecting all of California's children today and transform their future.

ACT - CA FOCUSES ON:



THE STEPS

Engage communities across CA to participate and act

Help communities assess their data to understand the root causes of child and community adversity

Communities set goals, design a roadmap for success, and adopt plans for action

Through the ACT-CA network, communities learn together and develop new best practices for transformative change

CHILD WELFBEING



WHY JOIN ACT - CA?

- Become part of the Movement
- Bolster and unify other city initiatives
- Leverage MHSA funding
- Broadens civic engagement
- Strengthens effective community outreach
- Like HEAL Cities, ACT-CA can be a signature initiative



Join and engage your city's Design Team



Support the adoption of a resolution to become an ACT-CA city



Join the ACT-CA network to build better systems for children and youth



Take part in the ACT-CA community-led assessment

**WHAT WOULD
PARTICIPATION
LOOK LIKE?**

REIMAGINING PUBLIC SAFETY



SOMEONE IS
BEHAVING
ERRATICALLY & IN
HARM'S WAY.

IMAGINE...

...TEXTING A NUMBER & AN
UNARMED URGENT RESPONDER
TRAINED IN BEHAVIORAL AND
MENTAL HEALTH COMES
WITHIN 5 MINUTES.

AN HOUR LATER THAT PERSON
IS SAFE & GETTING THE
SUPPORT THEY NEED.

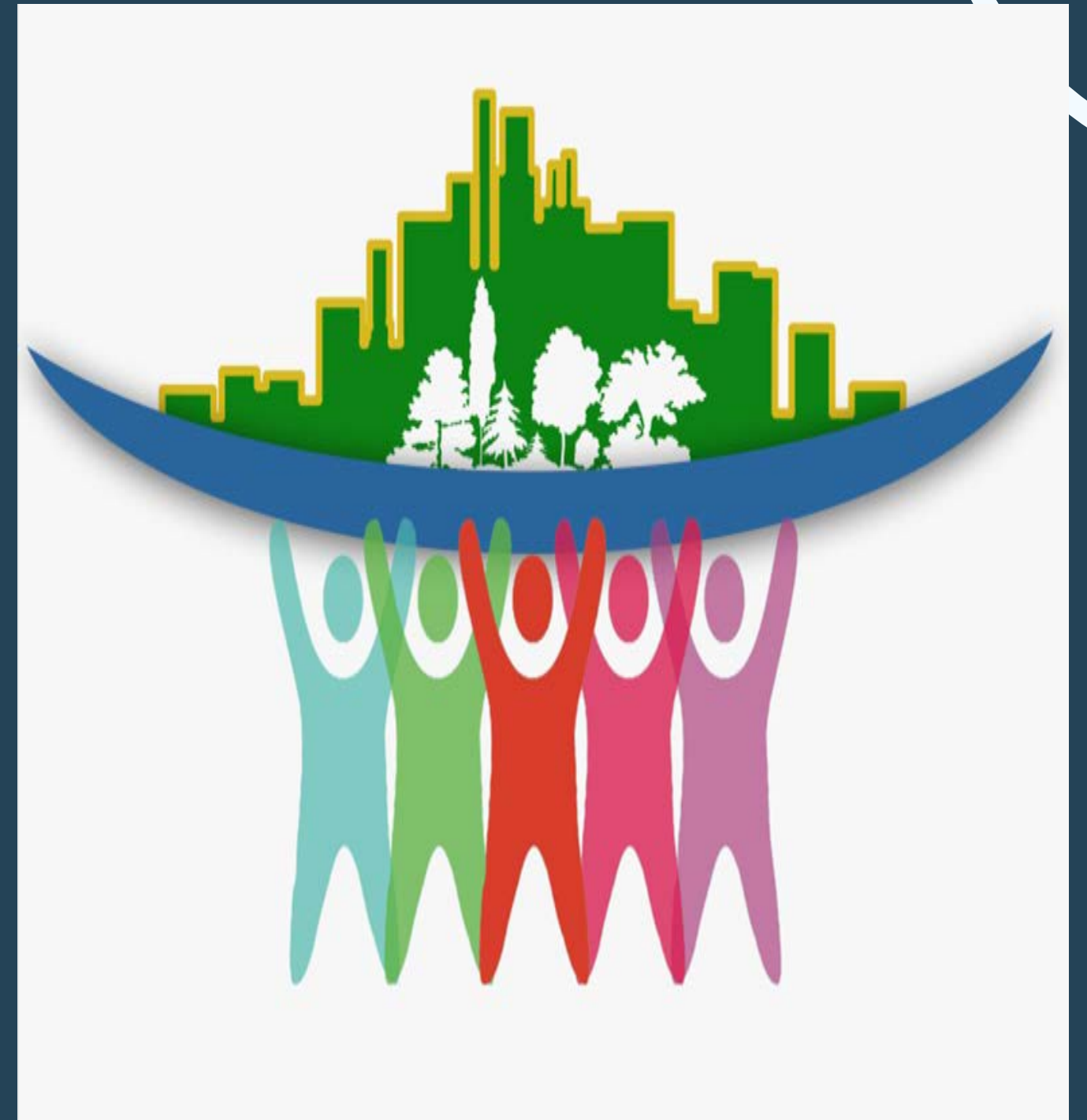
isn't that public safety?

- Currently, public safety is limited to police, fire safety, and emergency management
- **INSTEAD IMAGINE A WORLD WHERE...**
 - “Public Safety Services” include community partners and youth-focused prevention services
 - Stable, affordable housing, quality education, healthy and accessible food, and economic security, led to safer communities
 - Trauma-informed crisis workers respond to non-emergency requests, such as homelessness and mental health concerns, lowering risk for current first responders

YOUTH DESIGN TEAMS

- Central to ACT-CA is ensuring youth voices of the most vulnerable youth are heard
- Each city will have a Youth Design Team to inform the issues that will be addressed
- The Youth Design Teams create a leadership pipeline to better understand and promote policy changes -- so that

ALL CHILDREN THRIVE



WE'RE LOOKING FOR CITIES!

If you're interested in becoming an ACT-CA city, please reach out to
Kaytie Speziale at [KS@ PHAdvocates.org](mailto:KS@PHAdvocates.org)!

THANK YOU!

EMAIL

KS@PHAdvocates.org

PHONE

844.962.5900, x230

