



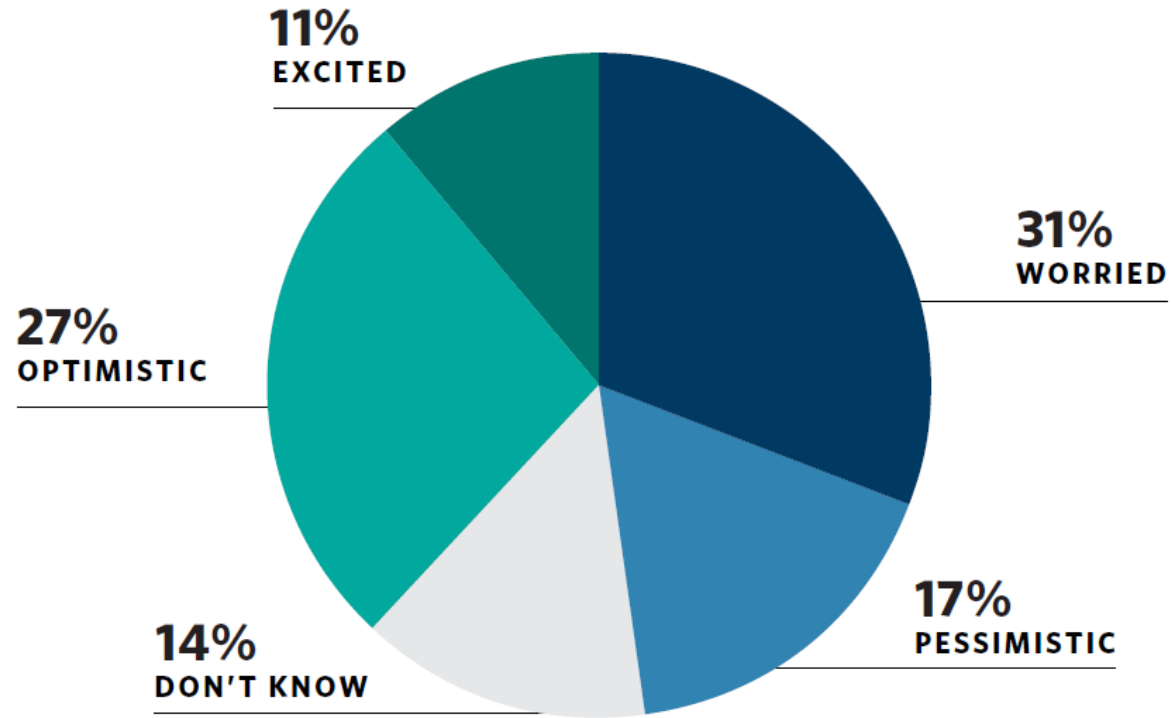
CARNEGIE
ENDOWMENT FOR
INTERNATIONAL PEACE



California – Leading the Way on Generative AI in Local Government

Artificial Intelligence: Pessimism/Optimism

Q: With regards to generative artificial intelligence, are you broadly:

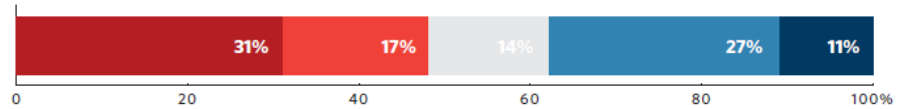


N=1,500



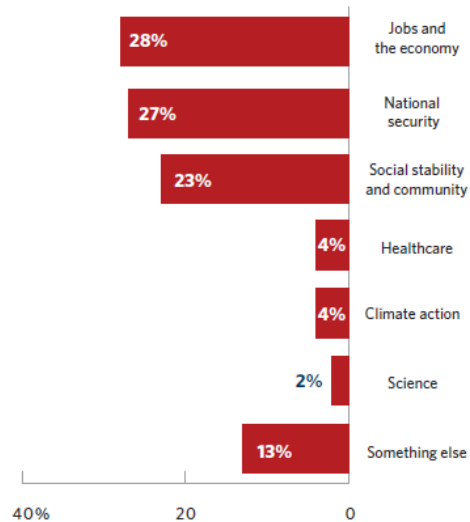
Artificial Intelligence: Pessimism/Optimism

Q: With regards to generative artificial intelligence, are you broadly:



WORRIED/PESSIMISTIC

Q: If you answered that you are broadly worried or pessimistic about generative artificial intelligence, which issue are you most worried/pessimistic about?



EXCITED/OPTIMISTIC

Q: If you answered that you are broadly excited or optimistic about generative artificial intelligence, which issue are you most excited/optimistic about?

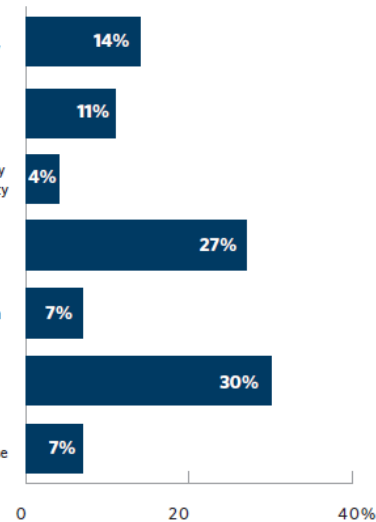


Figure 5. International Agreements on AI Standards

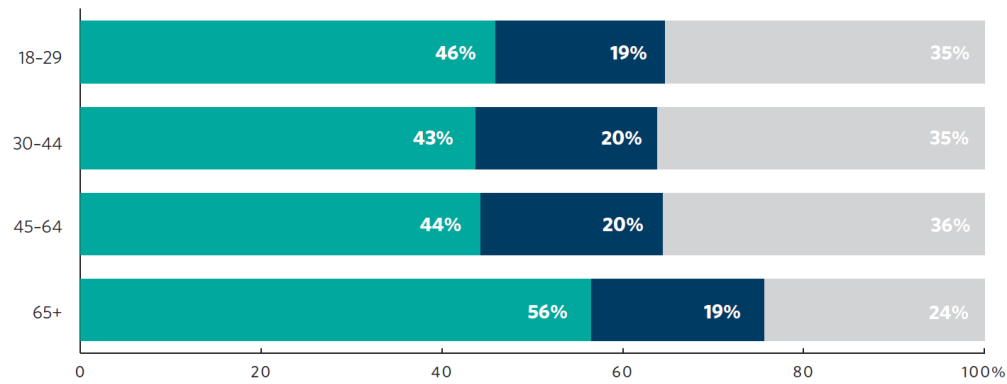
Q: *Would you support or oppose an international agreement on generative artificial intelligence standard setting?*

■ Yes ■ No ■ Don't know

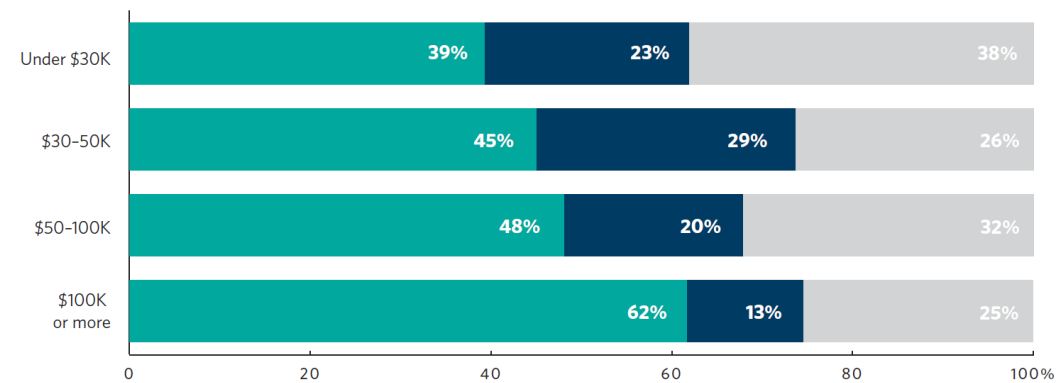
ALL RESPONDENTS



AGE GROUP



HOUSEHOLD INCOME



Source: 2023 Carnegie California Global Affairs Survey
N= 1,500





Insights

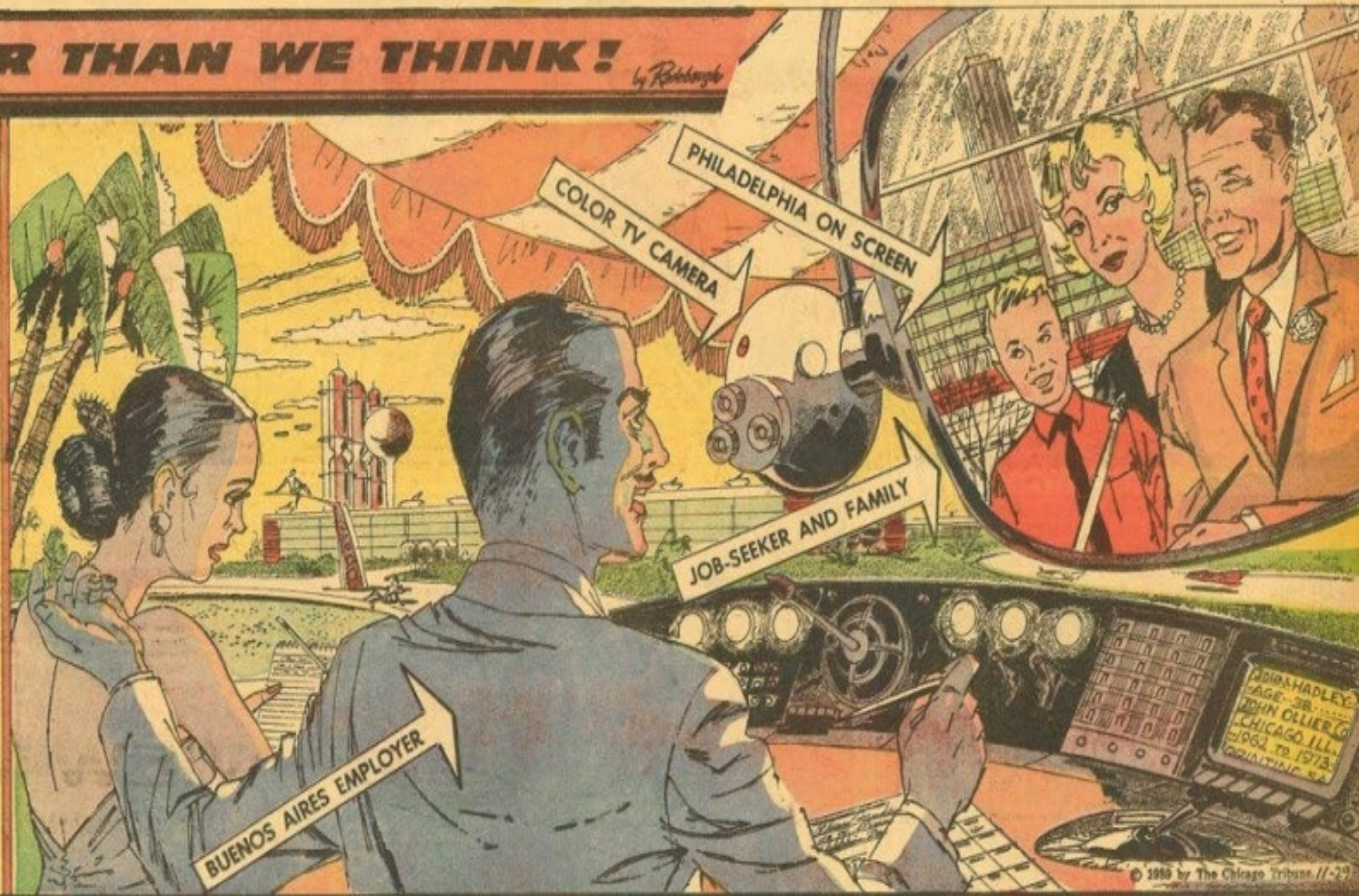
... **CLOSER THAN WE THINK!** *by Robinson*

ONE-WORLD JOB MARKET

Until recently, a man limited his job hunting to his home town. Now he sometimes searches the country. Tomorrow's job markets — and opportunities — will be world-wide.

Television will make it possible for an employer in Buenos Aires to interview a job seeker in Philadelphia. New Yorker Felix Cuervo has already pioneered in this direction, interviewing applicants for Civil Aeronautics Administration positions over a 2-way closed circuit. Said Cuervo: "Dress, bearing, manner and ability can be gauged over television about as accurately as in personal interviews."

Next Week: Wall in the Sky

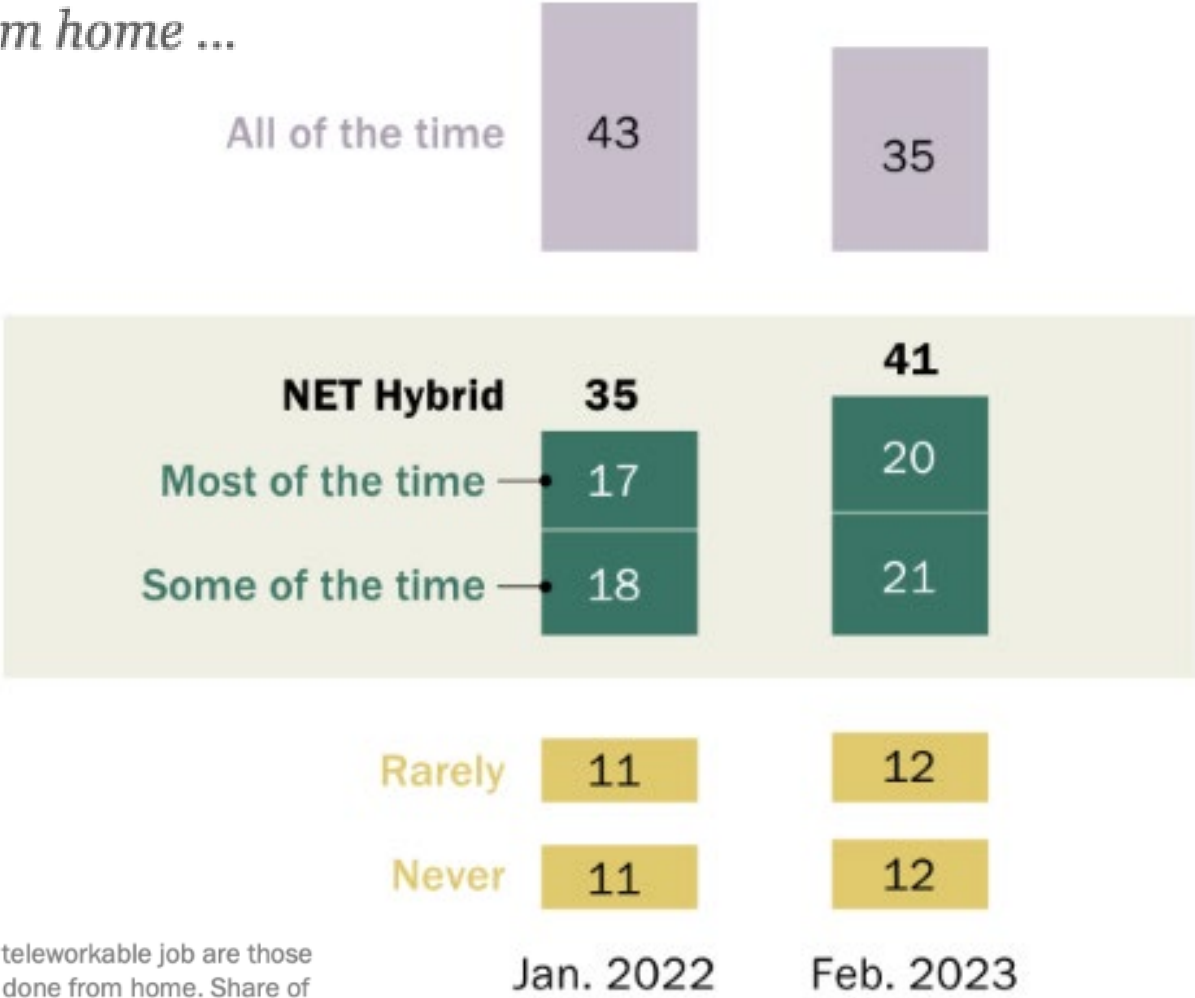






Growing share of U.S. workers are working a hybrid schedule

Among employed adults with a teleworkable job, % saying they are working from home ...



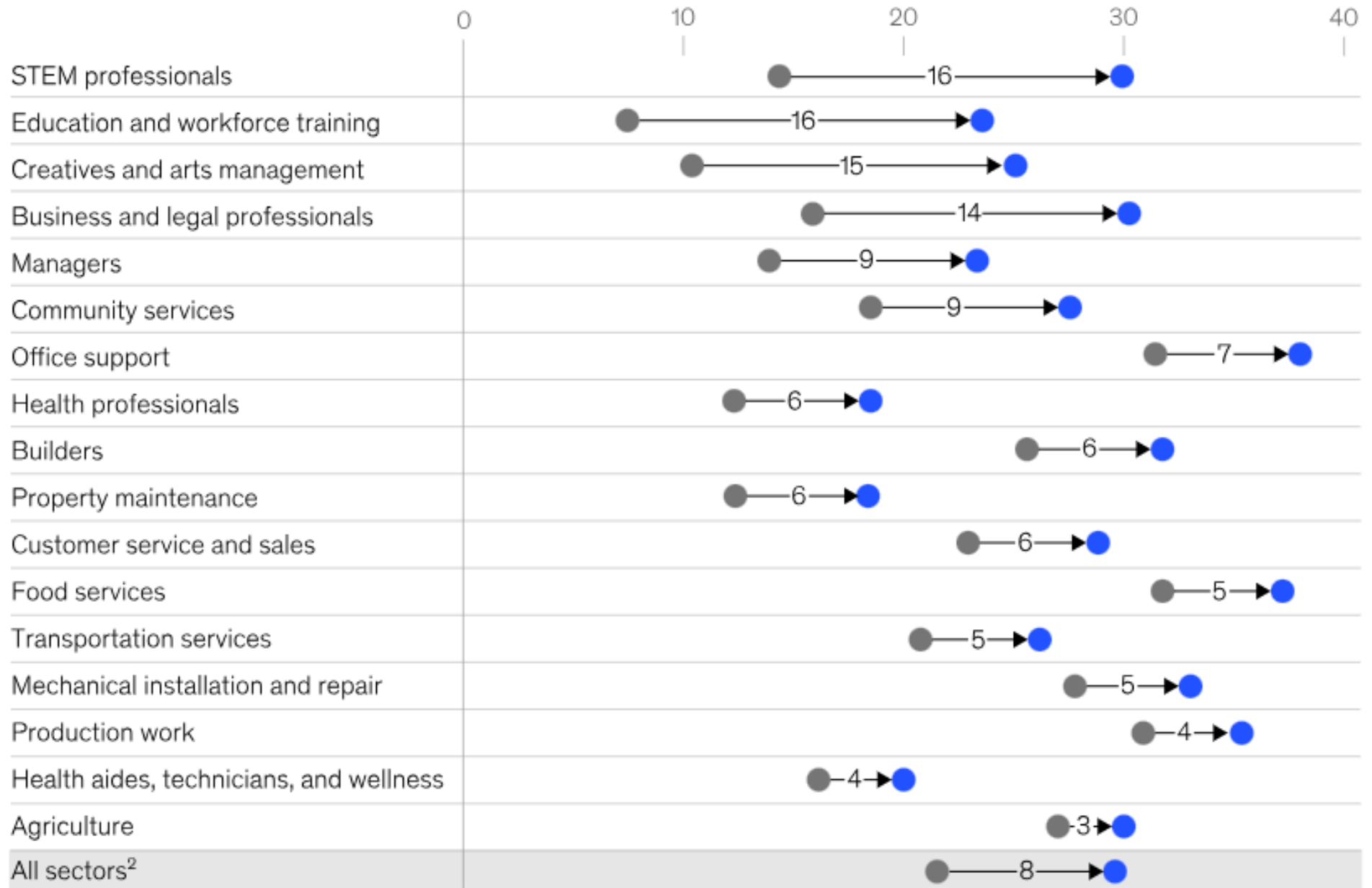
Note: Based on workers who are not self-employed. Adults with a teleworkable job are those who say, for the most part, the responsibilities of their job can be done from home. Share of respondents who didn't offer an answer not shown.

Source: Survey of U.S. workers conducted Feb. 6-12, 2023.

With generative AI added to the picture, 30 percent of hours worked today could be automated by 2030.

Midpoint automation adoption by 2030 as a share of time spent on work activities, US, %

- Automation adoption without generative AI acceleration
 - Automation adoption with generative AI acceleration
- XX — Percentage-point acceleration in automation adoption from generative AI







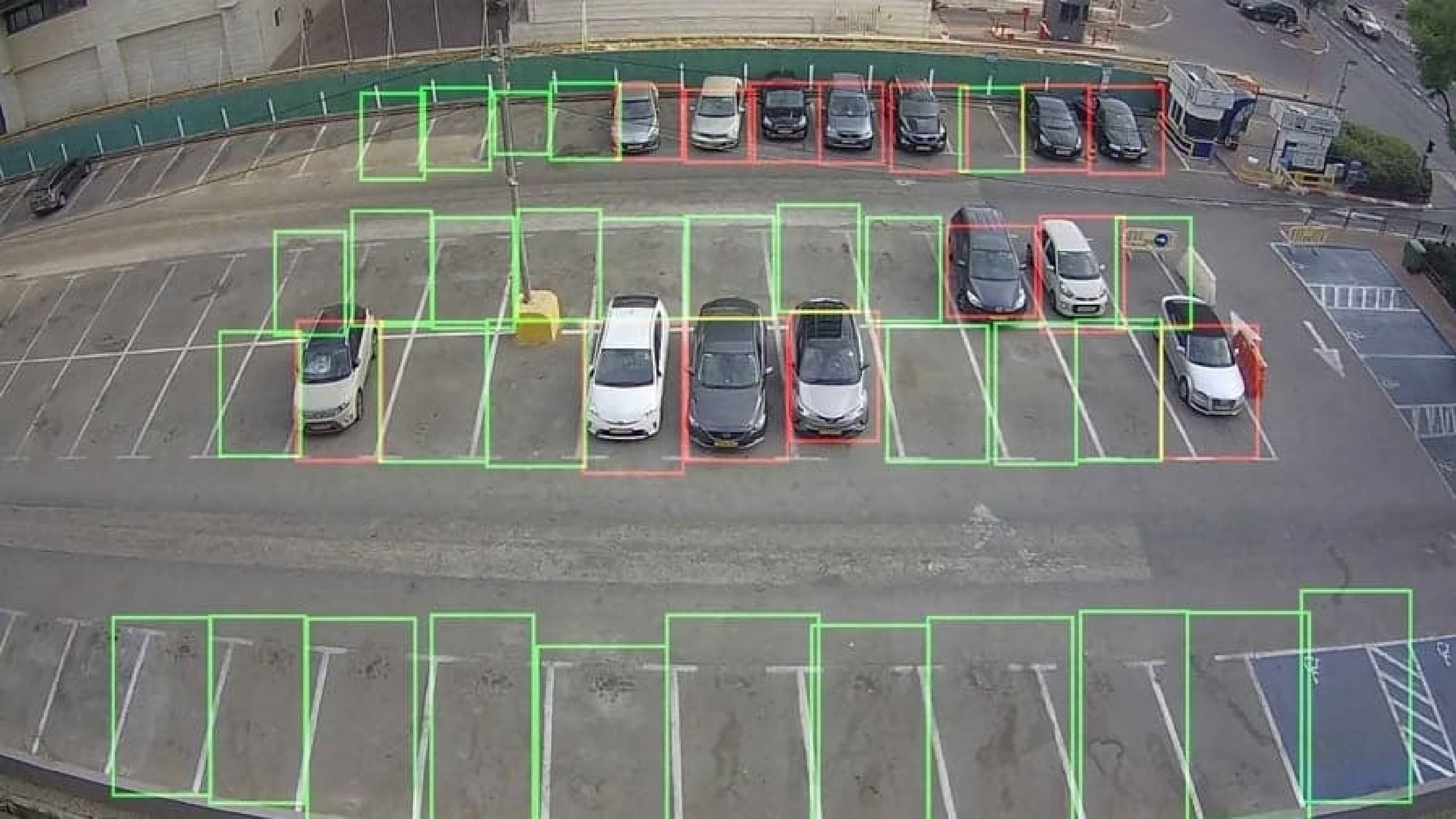
AI





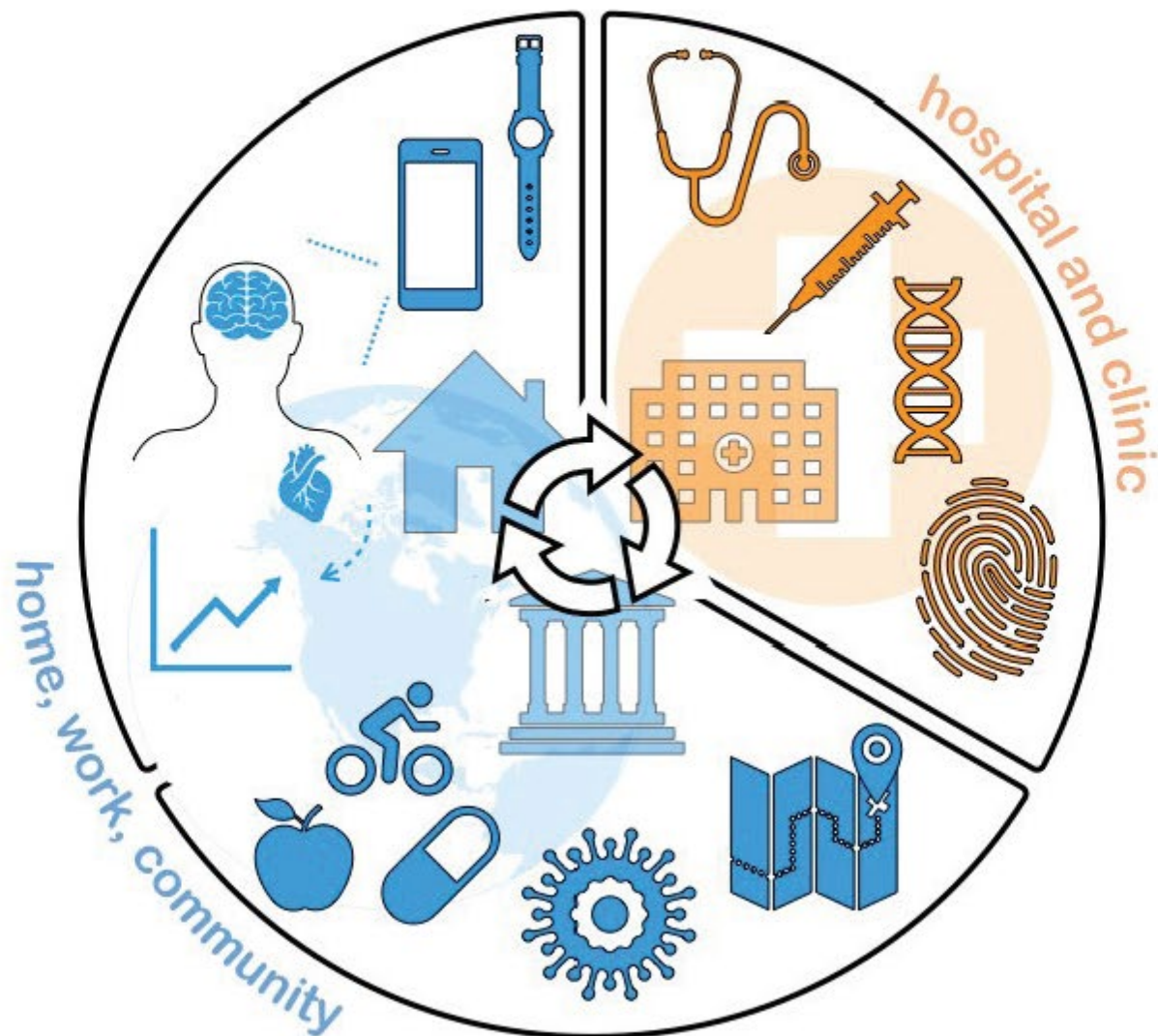
REVOLUTIONIZING ROAD SAFETY

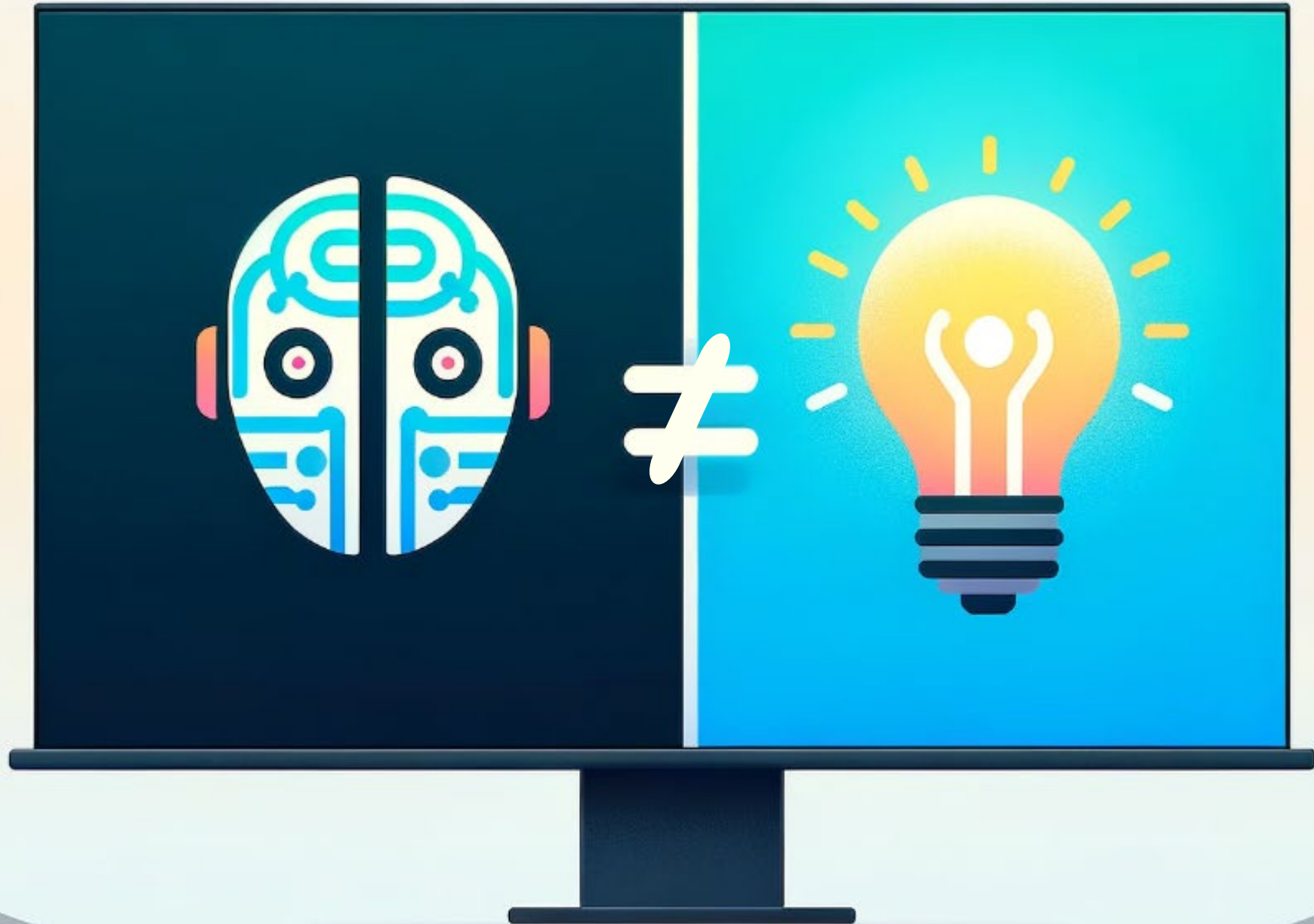
HOW A.I. IS BEING USED ON LOCAL ROADS TO IMPROVE SAFETY



AI in HSOHC

Artificial Intelligence in Health Settings **Outside the Hospital and Clinic**





Generative AI Maturity Model

Phase 0 | Restricted

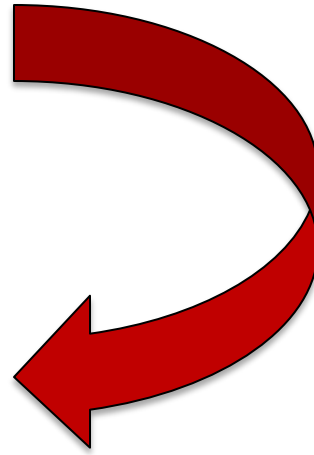
Phase 1 | Unengaged

Phase 2 | Limited Engagement

Phase 3 | Active Experimentation

Phase 4 | Limited Adoption

Phase 5 | Innovative



Seattle

- Artificial Intelligence Principles – Align with city’s values
- Acquisition of GenAI consistent with general technology policy
- Outputs reviewed by humans
- GenAI content must be sourced to the GenAI system
- Follow’s the city’s data privacy and security policies



San Jose

- Iterative guidance that may be updated quarterly
- City established working groups
- Users are responsible for materials created with AI support
- Cite and record use of GenAI via a form

GOVERNMENT AI COALITION



Overview



Deliverables



Open Letter



Deliverables
Guide



How to Join

WHAT / WHO	GOVERNMENT	CIVIL SOCIETY	ACADEMIA	PRIVATE SECTOR
VOTING RIGHTS*	Yes	No	No	No
BOARD MEMBER ELIGIBILITY	Yes	No	No	No
MAY ATTEND	<ul style="list-style-type: none"> General Coalition meetings Working group meetings 	<ul style="list-style-type: none"> General Coalition meetings Working group meetings 	<ul style="list-style-type: none"> General Coalition meetings Working group meetings 	<ul style="list-style-type: none"> General Coalition meetings Limited working group meetings
ADDITIONAL ACTIVITIES		<ul style="list-style-type: none"> Research projects Special projects 	<ul style="list-style-type: none"> Research projects 	<ul style="list-style-type: none"> Cross-agency AI applications

Boston

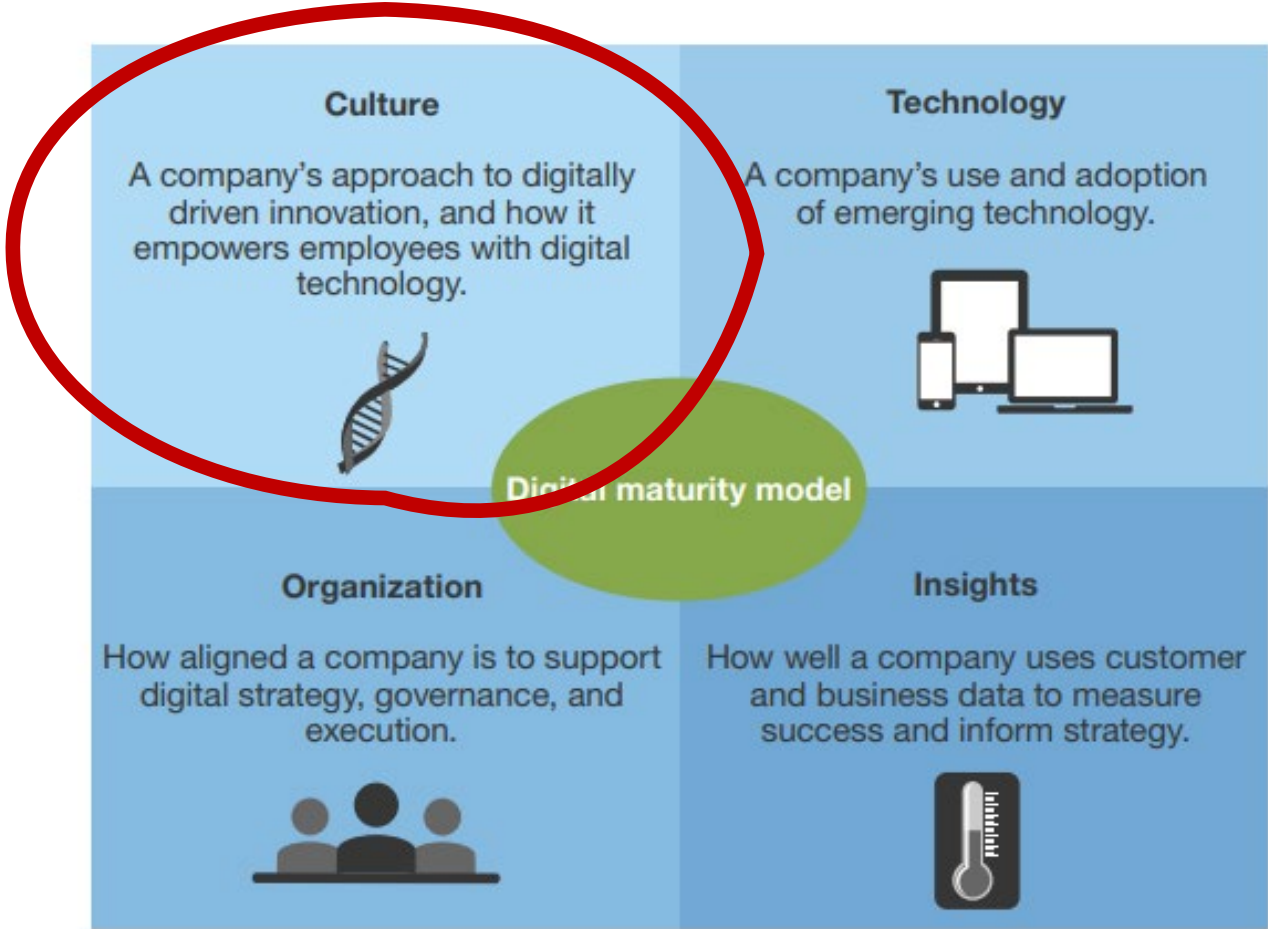
- Early guidelines to establish the responsible experimentation prior to policies and standards being created
- Generative AI is a tool
- Users are responsible for the outcomes
- Principles
 - Empowerment
 - Inclusion and Respect
 - Transparency & Accountability
 - Innovation & Risk Management
 - Privacy & Security
 - Public Purpose
- IT Department is a resource for learning about GenAI



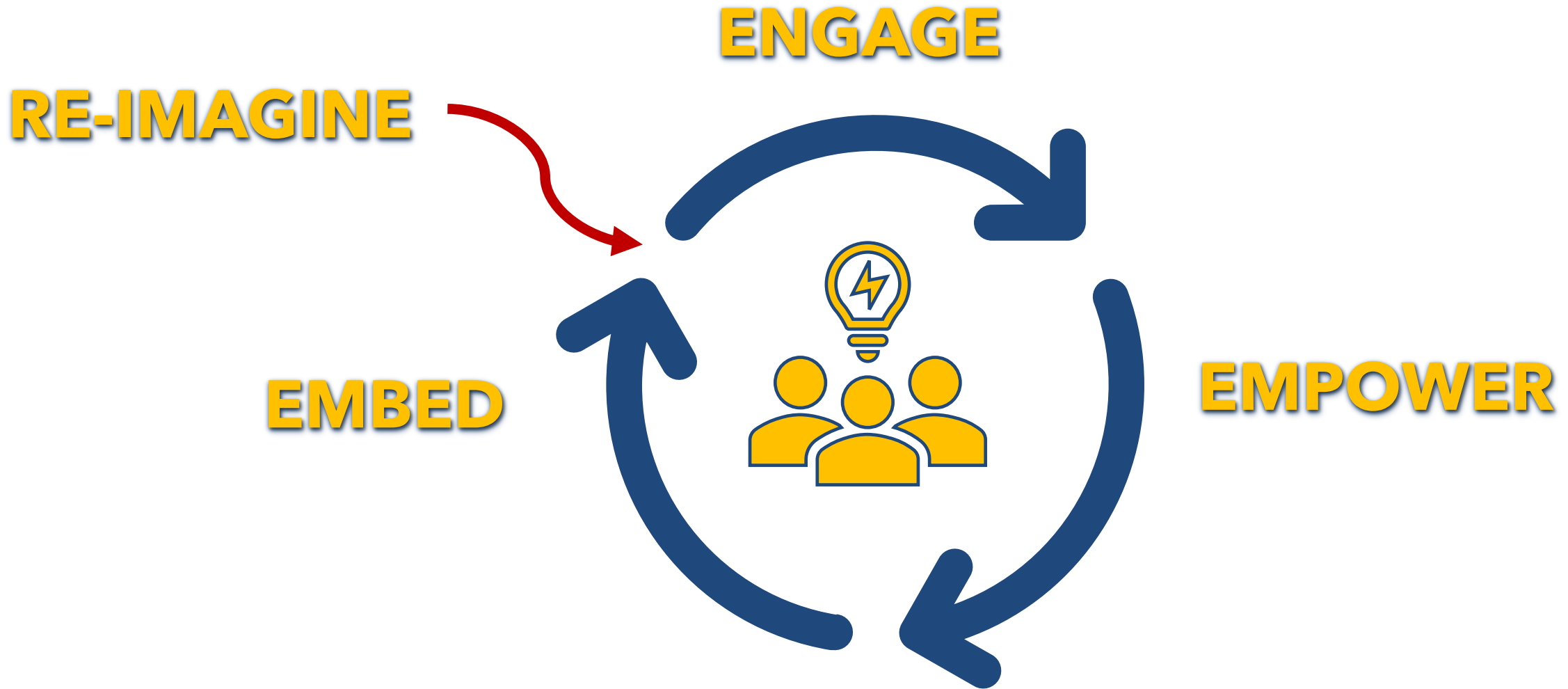
Carlsbad

- Included in the city's data policy orders
- Applies to all digital tools including Generative AI
- Is permissive in experimentation
- Focuses on professionalism and accountability
- Recognizes the value but that bias may exist
- Must adhere to privacy and security
- Respects employees and the collaborative nature of using technology for good

Digital Maturity Model



Roadmap to Success



City of Carlsbad City Council Data Policy

Data Governance Committee

1

Classification

- Scope
- Categorization
- Prioritization
- Retention



2

Protection

- Privacy
- Access
- Audits
- Backups
- Redundancy



3

Quality

- Standards
- Census
- Systems
- Analytics
- Training



4

Publication

- Framework
- Platform
- Open data
- Maintenance
- Engagement



 Data Driven Government 

Governance

- Oversight
- Implementation
- Audit
- Council Annual Report

Chief Data Officer, Chair
Multi-Departmental

Local Government Application

Content Creation

Data Analytics

Coding

Civic Engagement

Digital Assistant



Economic Scan

OFFICE OF INNOVATION + ECONOMIC DEVELOPMENT



Third Quarter, Fiscal Year 2020-2021

April 20, 2021

The following scan provides an overview of key economic indicators for January, February, and March 2021 for the City of Carlsbad. This economic scan is updated quarterly to provide information that is relevant to the health of Carlsbad's economy. For regularly updated information regarding the Carlsbad economy and economic development visit carlsbadca.gov/doingbusiness.

Job Postings (Source: EMSI, January - March 2021)

There were 10,607 unique job postings in Carlsbad between January and March, an increase of 1,065 postings from the previous quarter. This indicates a continued upswing in hiring over the past three quarters. The median posting duration was 30 days, slightly above the regional average. The median advertised salary for these postings was \$46,700. As seen in the previous quarter, the top-hiring industries were manufacturing, administrative services, and professional, scientific and technical services. Recent feedback from hospitality and restaurant businesses indicate rehiring in those industries has been a challenge to employers.



GENERAL

Carlsbad GRP (Source: EMSI, 2020)

\$15.3B

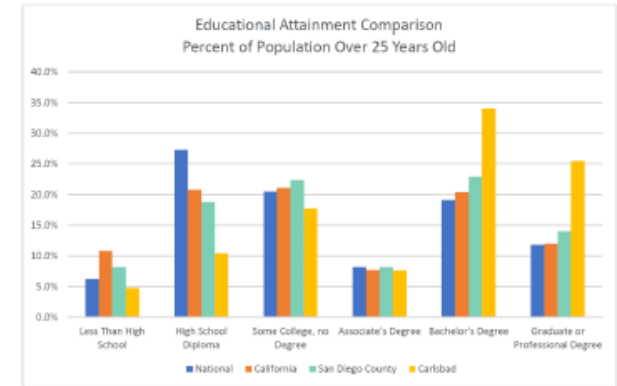


As of 2020, Carlsbad had the second largest gross regional product in San Diego County at \$15.3B, only trailing the City of San Diego. From 2019, GRP remained unchanged, signaling the pandemic yielded no economic growth. Key industries driving this output are professional, scientific and technical services, computer and electronic product manufacturing and other manufacturing. These industries are generally more resilient in recessions. Another major industry, accommodation and food services, has been severely impacted by the pandemic.

TALENT + WORKFORCE

Education (Source: U.S. Bureau of Labor Statistics - 2019)

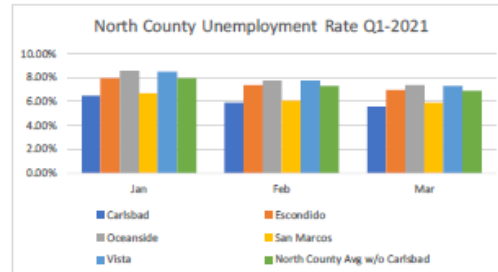
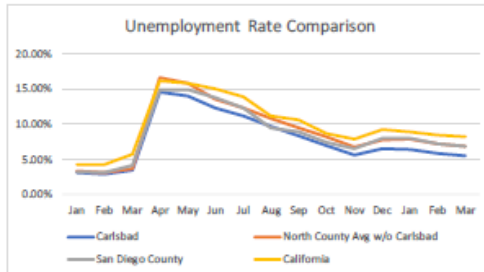
Carlsbad has established itself as having the right workforce to fuel innovation in tech and life sciences fields. Carlsbad businesses can access talent from San Diego, Orange County, and even southwest Riverside County. Nearly 60% of working-age residents hold a bachelor's degree, with more than 25% attaining an advanced degree. Outside of some communities in central San Diego, Carlsbad has the heaviest concentration of households with degrees in science, technology, engineering, and mathematics (STEM degrees). This is among the leading reasons that firms choose Carlsbad, the local talent.



JOBS

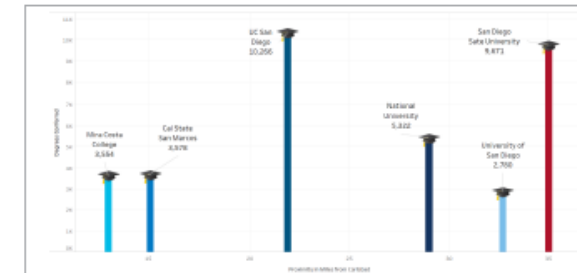
Unemployment Rate (Source: California Employment Development Department, March Report)

Prior to the pandemic, Carlsbad boasted a low unemployment rate of 2.9%. At the height of the pandemic, unemployment spiked to 13.8%. Unemployment improved to a low of 5.7% in November, before rising to 6.6% in December amid the surge of cases and corresponding health orders. Since then, unemployment has dropped again and now sits at 5.6%. Carlsbad continues to fare better than other North County cities, the County of San Diego, and the State of California.



Talent Pipeline

Nearby public and private universities offer top-notch programs. Within a 30-mile radius, more than a half-dozen universities and colleges confer more than 35,000 degrees annually. The Carlsbad business community works closely with higher education partners to align various education tracks with local workforce needs.





33 likes

sagepassiveincome 🎬 In this mesmerizing reel, a young and dynamic couple embarks on an incredible journey that leads them to an astonishing financial milestone! 💰📈👏

🔥 They have ingeniously tapped into the vast potential of e-commerce and harnessed the power of Amazon to swiftly generate a whopping \$20,000 in revenue! 📈📊💰

🧴 What sets their story apart is their unique niche in the market, as they passionately promote and sell a particular brand of salt. 🌍💙

💡 With unwavering determination and sheer entrepreneurial prowess, this couple has transformed their humble venture into a thriving business, leaving their peers in awe. 💪👉

☀️ Their inspiring journey epitomizes the boundless opportunities that await those who dare to dream big and unleash their potential in the digital realm. 💡🌐👉

🎬 So sit back, relax, and witness the magic as this young couple's tale of triumph unfolds before your eyes! 📺👉👀🎬
[@jashustles](#)

2 days ago



[Analyst Highlight] The City's state of emergency declaration drives a Spike in Bicycle & Dockless Vehicles discussions; commenters suggest age restrictions

Popular words



During the past week, online conversations about Bicycle & Dockless Vehicles elicited [6.1K interactions](#) - a 450% increase compared to the previous week....

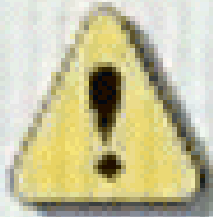
[Read more](#)

The Assistant



Completely people-centered, just like you.

- Automatically collects real-time data
- Proactive insights
- Export data easily
- Customize & issue reports and Excel sheets
- Segmentation and internal marketing tools
- Integrations



Microsoft Word

Do you want to save the changes you made to Document1?

Yes

No

Cancel





Common Themes

- Human in the Loop
- Privacy and Security
- Accountability
- Recognizing bias

Divergence

- Types and features of allowed or banned GenAI systems
- Employee authorization process
- IT Department involvement
- Level of granular documentation and use restrictions

Takeaways

- There are international, national, and state policy frameworks in development
- Local government engagement will be on a spectrum not ubiquitous
- Adoption should consider local context and public engagement
- GenAI presents a valuable opportunity
- Culture is key

A futuristic cityscape with a central golden mandala overlay. The mandala is a complex, multi-layered geometric pattern in shades of gold and brown, centered on a glowing circular hub. The city below is dark and detailed, with various skyscrapers and buildings. The overall scene is illuminated with a warm, golden light, creating a sense of depth and complexity.

Put

People

First



California Leading the Way