



WWW.DIGNITYMOVES.ORG



LEAGUE OF
CALIFORNIA
CITIES

Homelessness to Housed: How Cities Create & Leverage Strong Partnerships

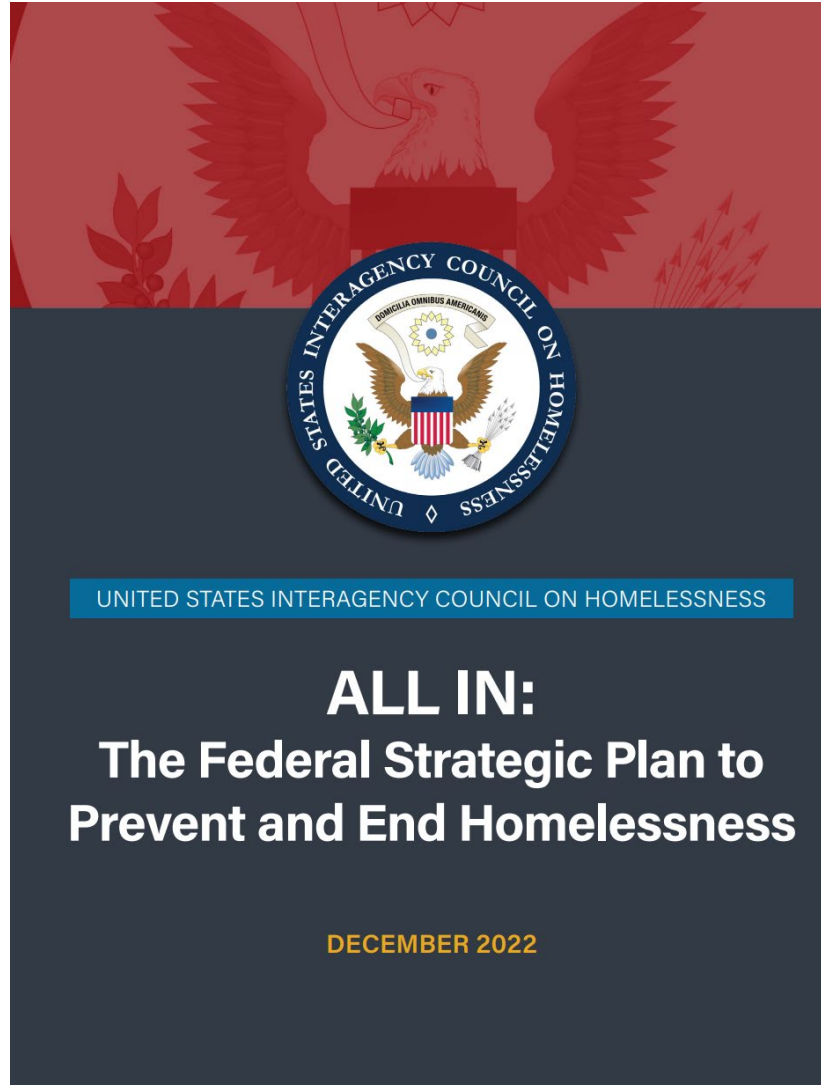
September 20, 2023

U.S. Interagency Council on Homelessness Coordinating the Federal Response





U.S. Interagency Council on Homelessness





All In: Vision For the Future

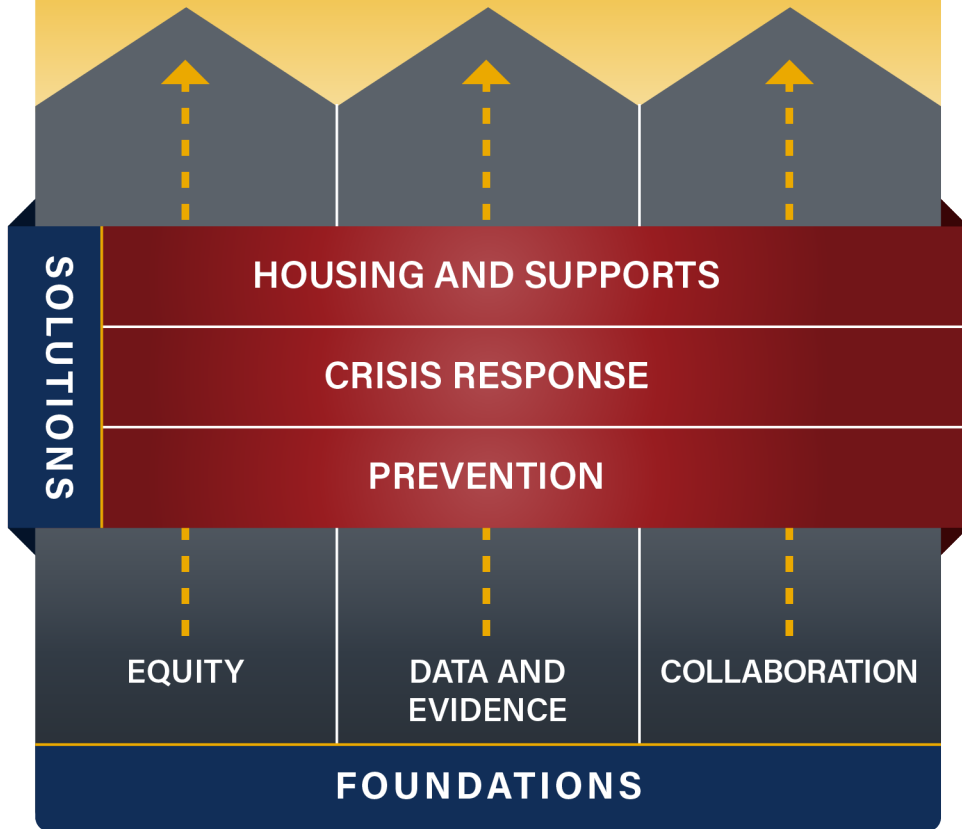
This plan is built upon our vision of a nation in which **no one** experiences the tragedy and indignity of homelessness, and **everyone** has a safe, stable, accessible, and affordable home.

GOAL: Reduce homelessness 25% by 2025



ALL IN: THE FEDERAL STRATEGIC PLAN:

END HOMELESSNESS



SOLUTIONS

HOUSING AND SUPPORTS

CRISIS RESPONSE

PREVENTION

EQUITY

DATA AND
EVIDENCE

COLLABORATION

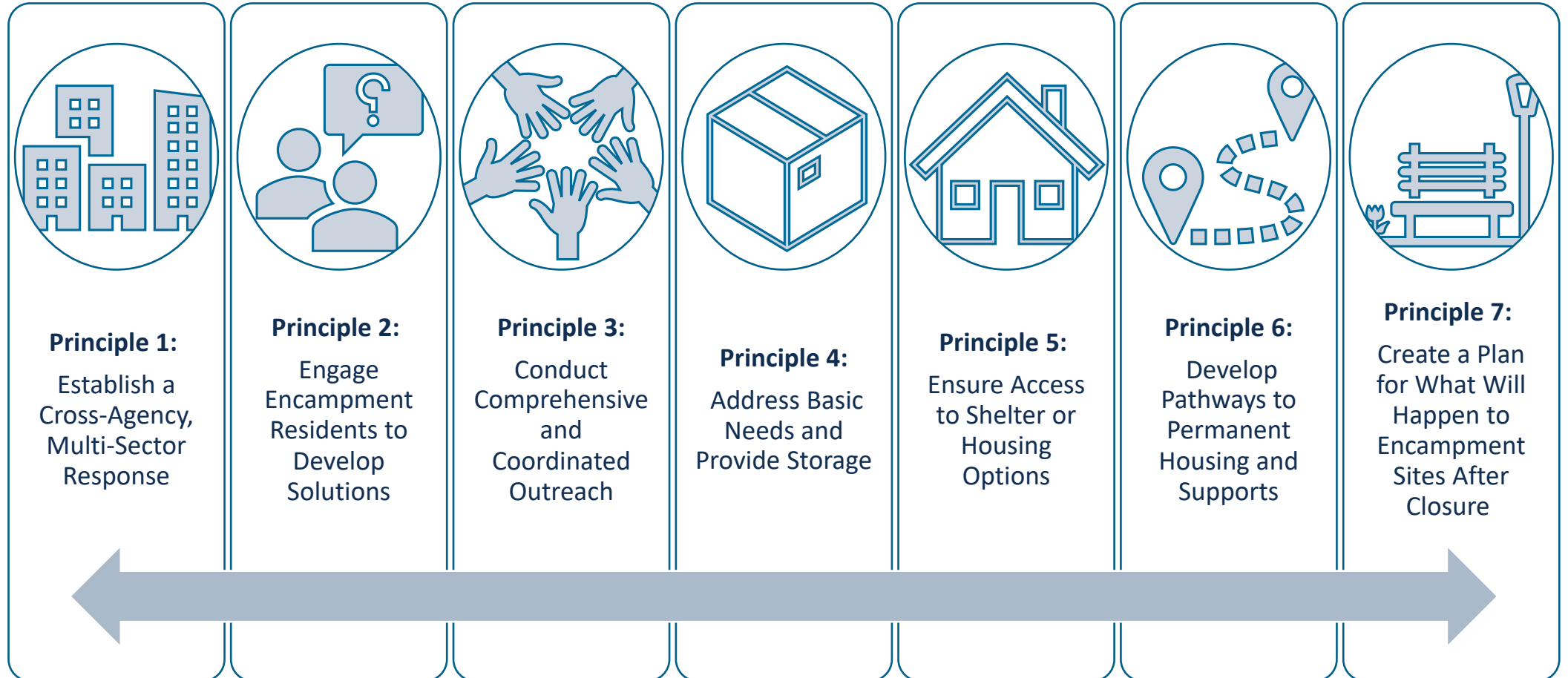
FOUNDATIONS



ALL INSIDE



Principles for Addressing Encampments



Public/Private
Partnerships



WWW.DIGNITYMOVES.ORG

DignityMoves

Reimagining SCALABLE solutions to unsheltered homelessness

Permanent housing is the ultimate goal:

- Expensive, takes many years, zoning and other constraints.

Languishing on streets causes rapid decline:

- Every day diminishes chances of returning to self-sufficiency

Enormous cost to society annually:

- Costs less to solve than maintain the status quo

Our Streets Cannot Be
The Waiting Room!



Interim Supportive Housing

For the individual:

- A dignified alternative to congregate shelters
- Everyone gets their own room, with a door that locks
- Privacy, pets, partners, and a sense of true security
- A place to take a deep breath, stabilize, and start to think forward
- 6-24 months, intensive supportive services, document readiness, benefits

For the system:

- A sorting mechanism: assess and direct people to tailored next steps
- Shifts supportive services resource allocation earlier in the homelessness cycle, when they have the potential for greater efficacy
- Temporary nature allows cities to dial up and dial down capacity as needed
- The opportunity for segmentation: not one-size-fits-all programs

Early housing interventions increase the likelihood of returning to self-sufficiency



— Ryan “Nobody” Bauer has been homeless for 30 years.
Sam Whiting/The Chronicle

Our innovative approach

- Land is expensive: We borrow it.
- Building codes are onerous: This crisis merits emergency codes.
- Construction costs are escalating: We use state-of-the-art prefabricated solutions.
- People don't like group shelters: Everyone gets their own room & a door that locks.
- Zoning is restrictive: Relocatability and emergency status makes zoning more flexible.
- NIMBY resistance is fierce: We harness it.
- Cities have limited staff resources: We do the work.
- The scale is daunting: This is an all-hands-on-deck public/private/philanthropy collaboration.



Attractive, trauma-informed communities

Exteriors to match the local aesthetic



Not “emergency cabins”
Durable, relocatable, attractive interim housing

Community spaces

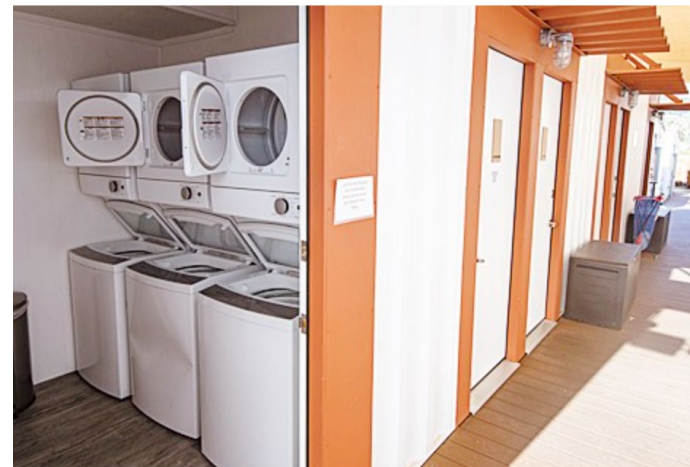


A variety of manufacturers depending on project needs



Fire-resistant, steel-framed,
High ceilings...and meet codes

Bathroom buildings



Funding and Resources

- Vacant land (public or private) is a squandered asset:
 - Private developers with projects tied up in entitlements or postponed
 - Land slated for housing, transit, other developments in the future
- At an average of \$50k/unit, philanthropy can significantly contribute to capital costs:
 - Allows for greater flexibility and speed
 - De-risks new innovations
 - Gives the local community a voice in the program
- Supportive services funding through local and state government (often complicated)
- Hospitals, community improvement districts
- Homekey, Encampment Resolution Funds

We partner with cities to bring together all necessary resources



33 Gough San Francisco
70 rooms, 94 people, 4 months, \$2.2m

1016 Santa Barbara Street
35 rooms, 45 people, 6 months, \$1.8m

Over a dozen communities on the horizon

- | | |
|----------------|-----------------|
| Santa Maria | Atlanta |
| La Posada | Morro Bay |
| Thousand Oaks | San Luis Obispo |
| Los Angeles | Grover Beach |
| Oakland | San Jose |
| San Bernardino | Sacramento |
| Watsonville | Modesto |

Labath Landing, Rohnert Park
60 rooms, 4 months, Homekey 2

Dignity Village, Alameda
72 rooms, 6 months, Homekey 2

237 beds in place today...
Over 1,000 projected in the next year



Overcoming Resistance

- Emphasis on exterior aesthetics
- Placement prioritization to those in the immediate area
- No-camping ordinances
- Community engagement (Adopt-a-Room)
- AT SCALE: scattered across the region
- Temporary (5 years) and relocatable
- Extra neighborhood patrols
- No walk-ups, no day services
- Staff trained in de-escalation



We harness the powerful force of NIMBY: We TOO want neighborhoods that are safe, clean, thriving

Helping cities reach their goals



Cities have minimal staff resources: We help design city strategic action plans that are practical and feasible

Interim vs. Permanent: We are sponsoring legislation and changing the narrative: interim housing can play an essential role in the broader toolkit

Moving people out of the system: DignityWorks pilot provides a path to employment and independent self-sufficiency

Limited budget flexibility: Private capital is catalytic and flexible

SCALE: DignityNOW tackles the entire unsheltered need at once.

Most importantly,

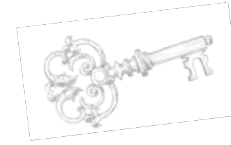
We are reigniting lost optimism. It CAN be done.

Dignity Moves
in Action:
Santa Barbara
County



The Why...

Project Goals

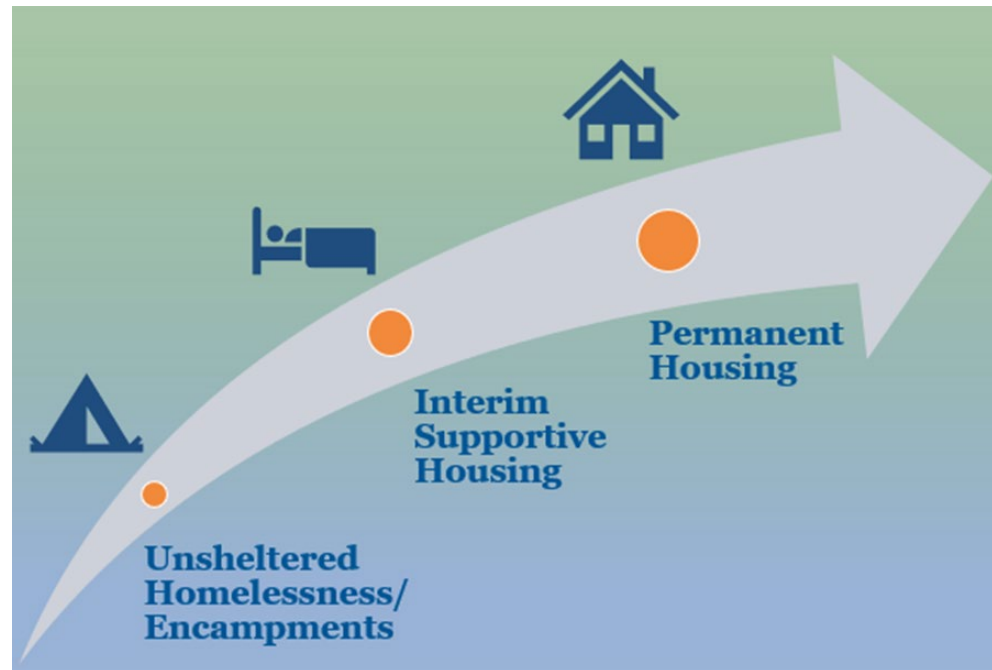


Resolve encampments

Provide a dignified bridge to permanent housing

Provide supportive services

Leverage funding – Public/Private/Community partnerships



The Why...

The Need



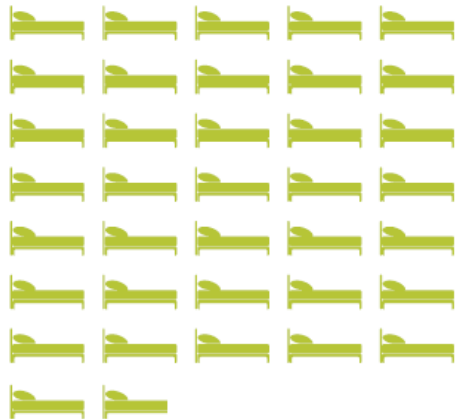
MID COUNTY: 61 Beds Needed



NORTH COUNTY: 133 Beds Needed



SOUTH COUNTY: 369 Beds Needed



 =10 Beds

What will it take?

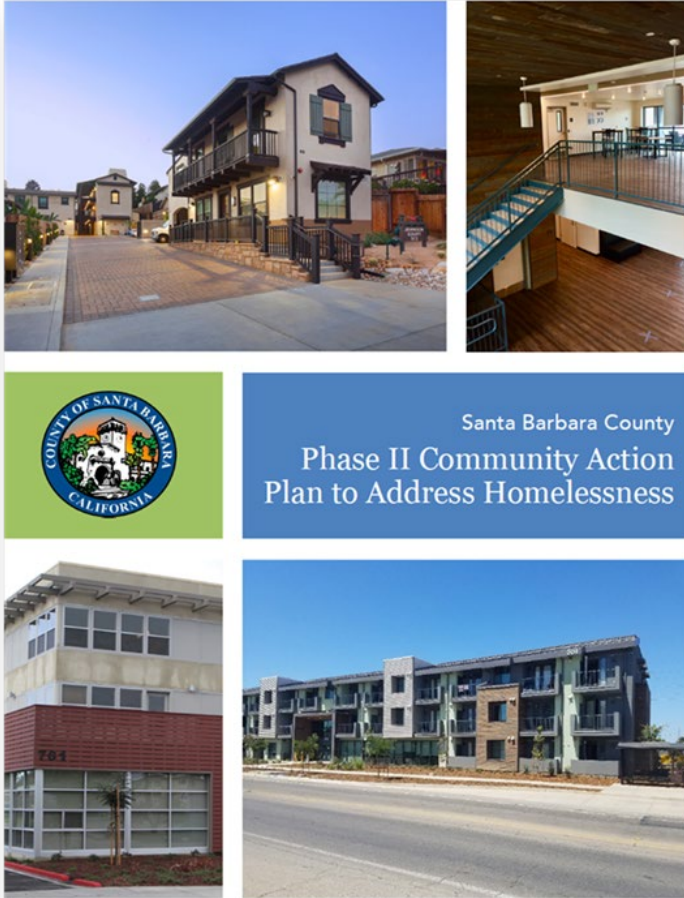
- Need: **563 beds**
- Currently: **140 beds**
- In the pipeline: **approx. 123 beds**
- Shortfall: **300 beds**

Our partnerships presents a unique and realistic opportunity to close the gap presents a unique and realistic opportunity to build the additional 300 units needed to meet the current demand.



The How....

Community Action Plan – County & Cities Adopted Strategies



Increase access to safe, affordable housing



Use best practices to deliver tailored supportive services



Build a collective action plan-Improve data sharing



Strengthen support systems to help obtain & maintain housing



Build provide capacity to address the needs of specific populations

The What...

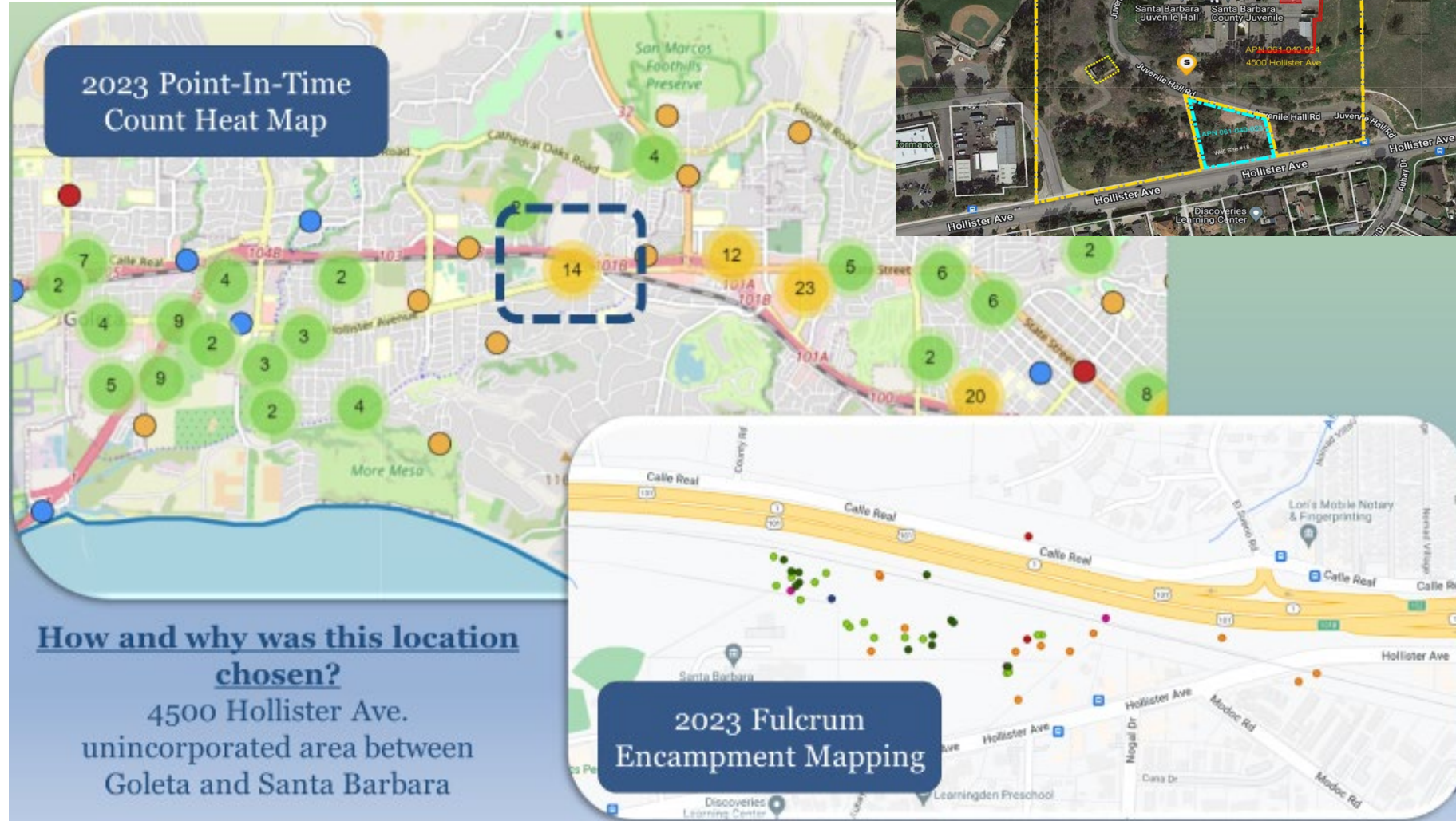
The Project



- “Temporary Interim Supportive Housing” - 5 years (term limited on site)
- County of Santa Barbara and DignityMoves are collaborative partners with a shared mission to serve clients experiencing homelessness.
- Private, Public, Philanthropic Partnership
- Maximize use of underutilized lands on temporary basis
- Shorter term strategy as permanent options are planned – Bridge to adequate housing supply
- Congregate shelter does not work for all
- Services include security component
- **Prioritizes placement of those in area to resolve encampments**



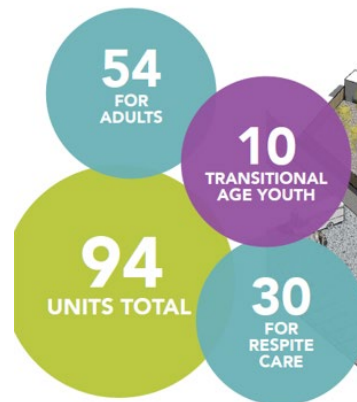
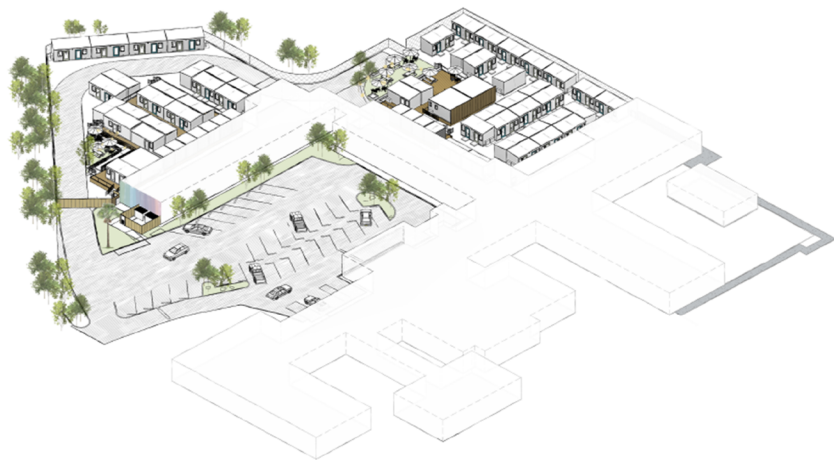
The Where....



Dignity Moves South Completed Site

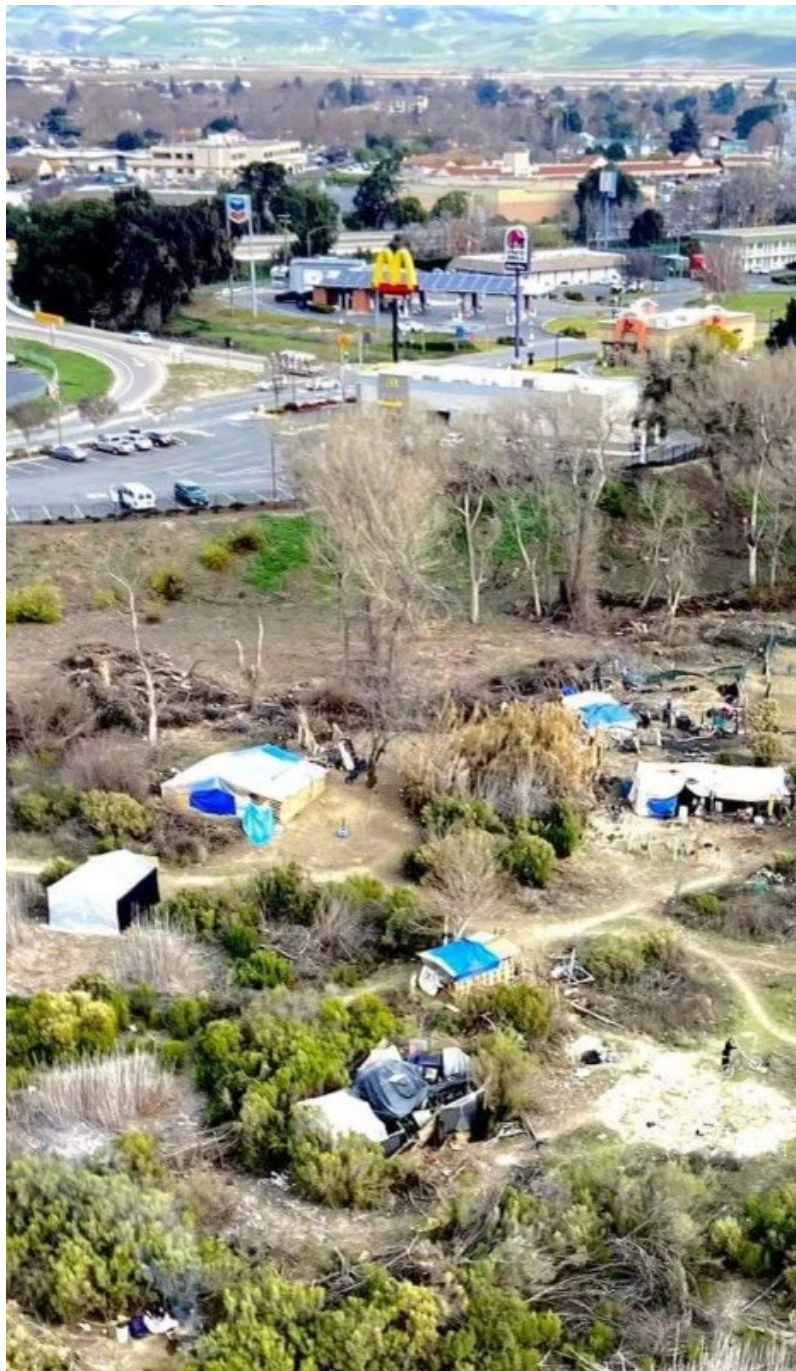


Projects in Development – La Posada & Hope Village



Small Cities
Making a
Big Impact





Homekey



BEFORE



AFTER









WWW.DIGNITYMOVES.ORG



Dialogue & Q&A



LEAGUE OF CALIFORNIA CITIES

September 20, 2023



WWW.DIGNITYMOVES.ORG



LEAGUE OF
CALIFORNIA
CITIES

Homelessness to Housed: How Cities Create & Leverage Strong Partnerships

September 20, 2023