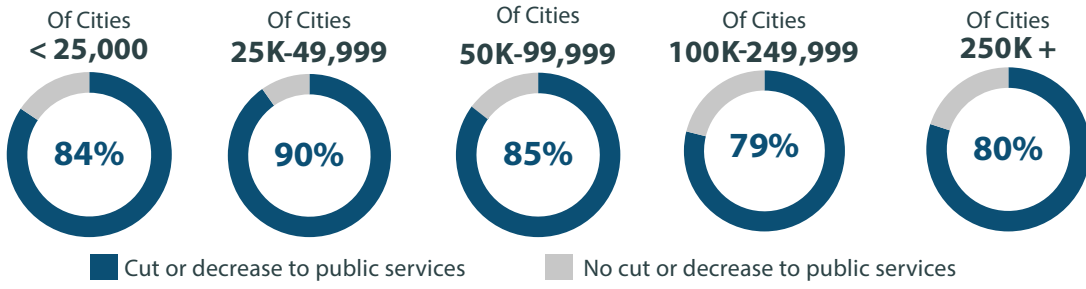


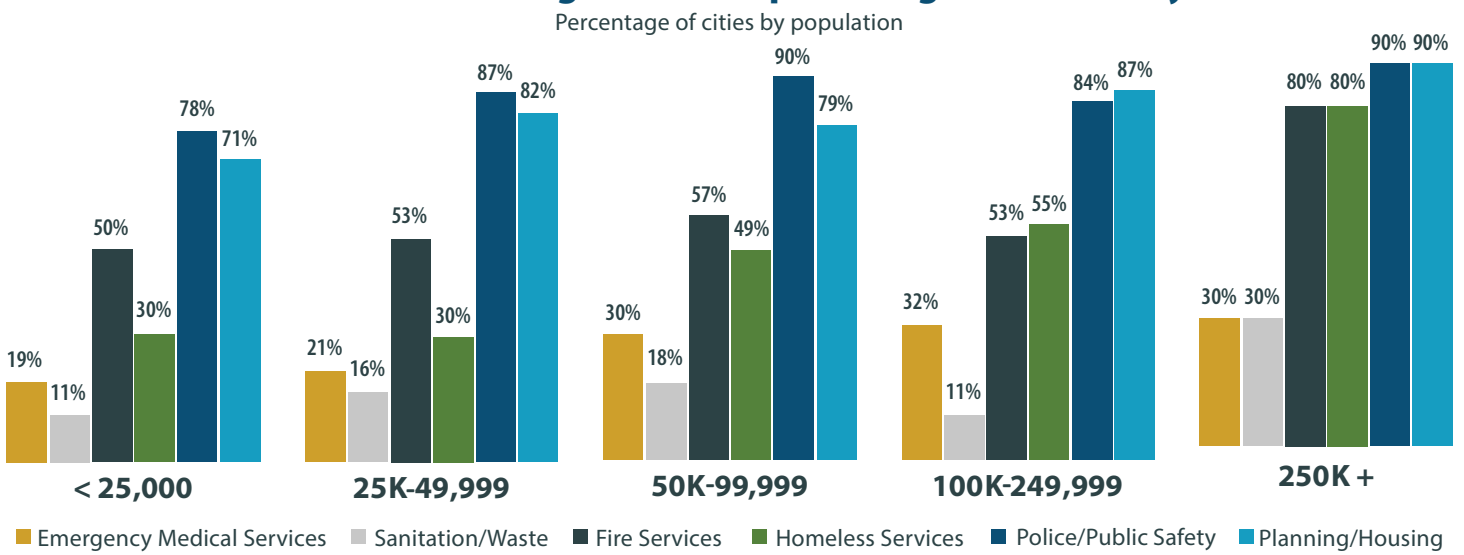
COVID-19 Fiscal Impact on California Cities

California cities face severe revenue shortfalls due to the impact of the COVID-19 pandemic on their economies and increased emergency costs. As a result, cities will be forced to make significant reductions or cuts to a broad range of core public services and staff, regardless of population size. Given current and projected revenue shortfalls, cities need fiscal assistance to stabilize local government operations to offset the devastating impacts the crisis is having on California's communities. These findings are part of a new data analysis* by the League of California Cities.

Public Services Will Be Impacted By Drastic Revenue Loss



Core Services Face Significant Impacts Regardless of City Size



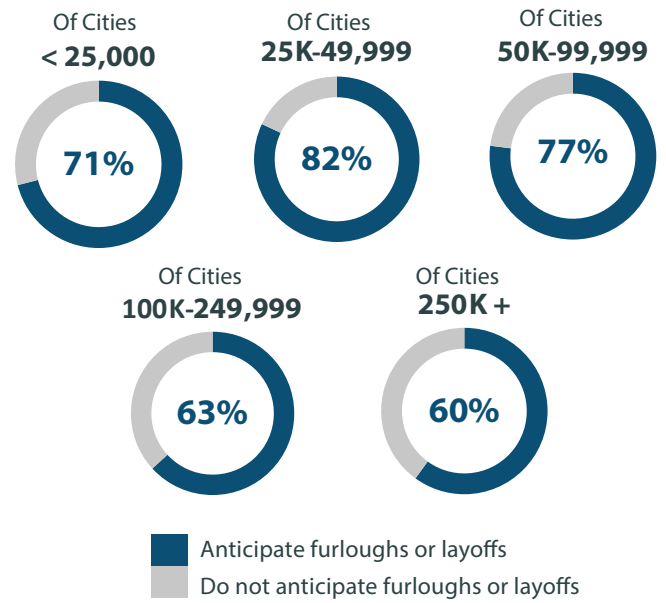
Cities anticipate a nearly **\$7 BILLION GENERAL REVENUE SHORTFALL** over the next two fiscal years. This shortfall will grow by billions of dollars if COVID-19 stay-at-home orders extend into the summer months and beyond.

City Leaders Report Immediate Impact to Core Revenue Sources

- 100%** Sales Taxes
- 89%** Hotel/Bed Taxes
- 72%** Property Transfer Taxes
- 42%** Utility Taxes
- 15%** Investments, Forfeitures, and Fines
- 4%** Parking and Admissions

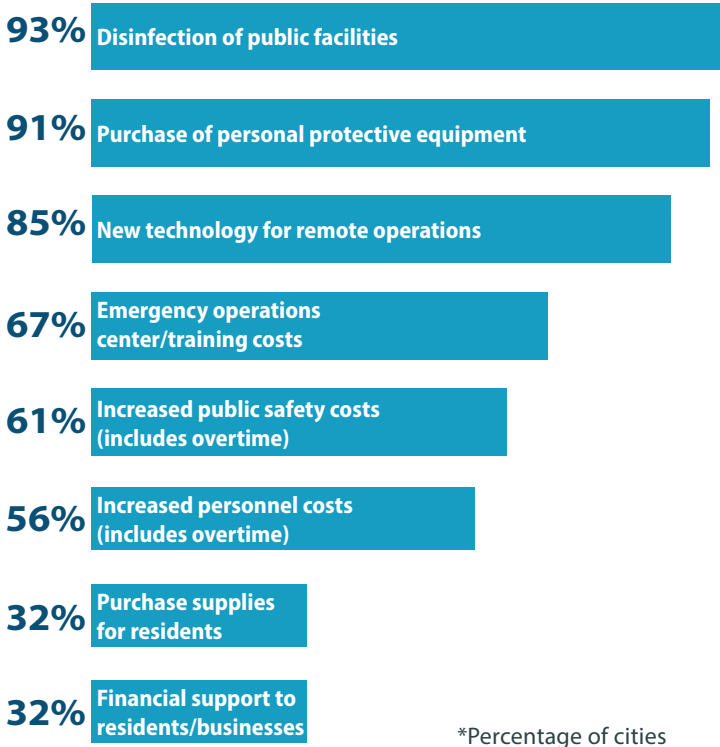
12% of cities report spending **> \$500k** to help control the COVID-19 pandemic

COVID-19 Has Staggering Impact on City Workforce



Over **90%** of cities are considering **LAYOFFS OR EMPLOYEE FURLOUGHS**, or **CUTTING PUBLIC SERVICES**. **72%** are considering doing **BOTH**.

Unanticipated COVID-19 Expenses



100% of California cities, regardless of population size, **face projected revenue loss this year**

Cities Key Revenue Loss by Source through FY 21-22



For more information email communications@cacities.org.

***Data and Assumptions:** The current revenue shortfall projections assume the ending of strict stay-at-home orders by the end of May 2020 with a transition to normalcy and a gradual return to taxable activities. The revenue shortfall projections include FY 2021-22, as there will be delayed revenue impacts from multiple sources, including business license taxes (based on prior year receipts). If strict stay-at-home orders remain in place through the summer of 2020, there will be additional significant revenue losses – adding billions to overall city shortfalls. Over 260 cities, encompassing all of California's diverse geographies and city sizes, participated in the League's COVID-19 Fiscal Impact Survey. The survey requested primary source data on projected revenue losses in key, general revenue categories, and local impacts to city services and operations. The survey data reinforces projections produced from an in depth financial model built from annual reports by the State Controller and the California Department of Tax and Fee Administration, survey data, granular analysis by government revenue specialists, industry specific outlooks, and forecasts from respected economists.