

Creating Equitable and Resilient Communities

Mayor Farrah N. Khan
City of Irvine



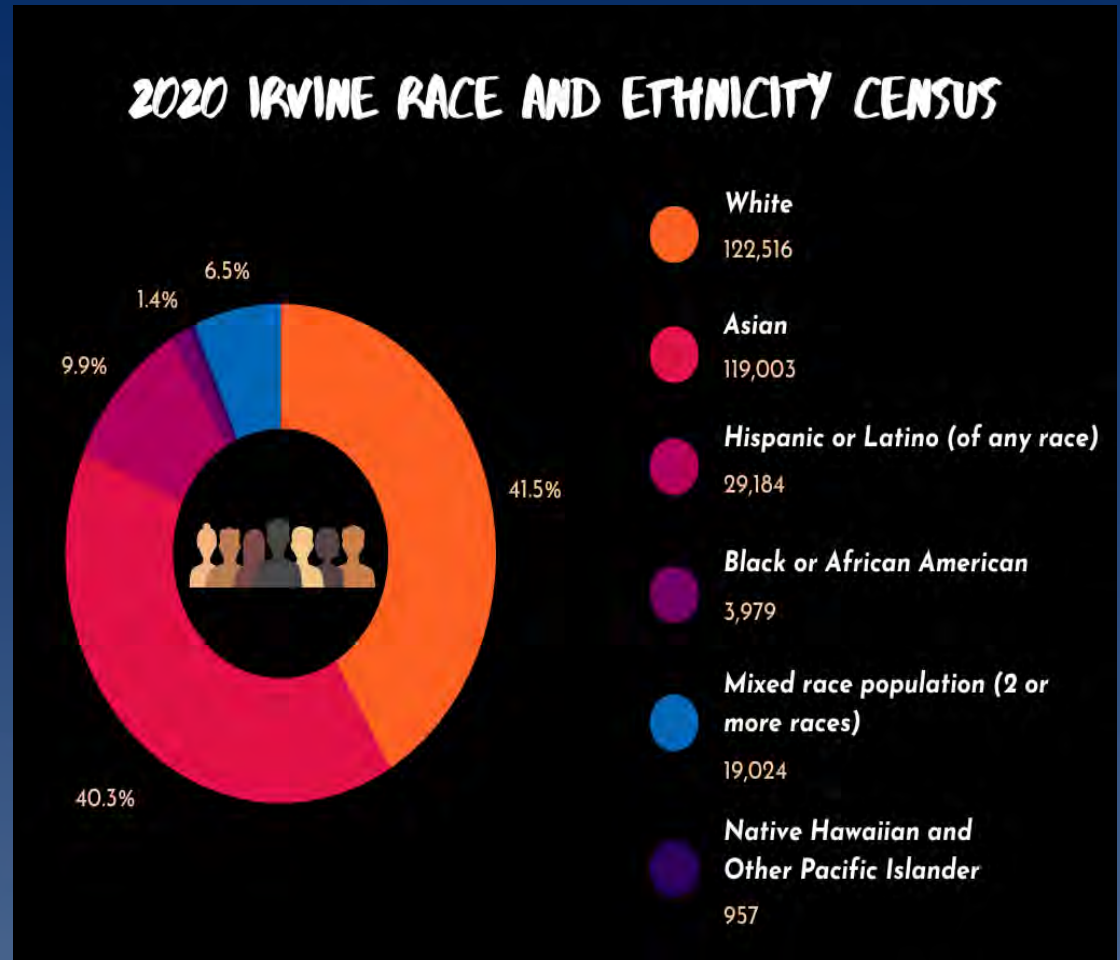
MAYOR
Farrah N. Khan

CITY OF IRVINE



Irvine Demographics

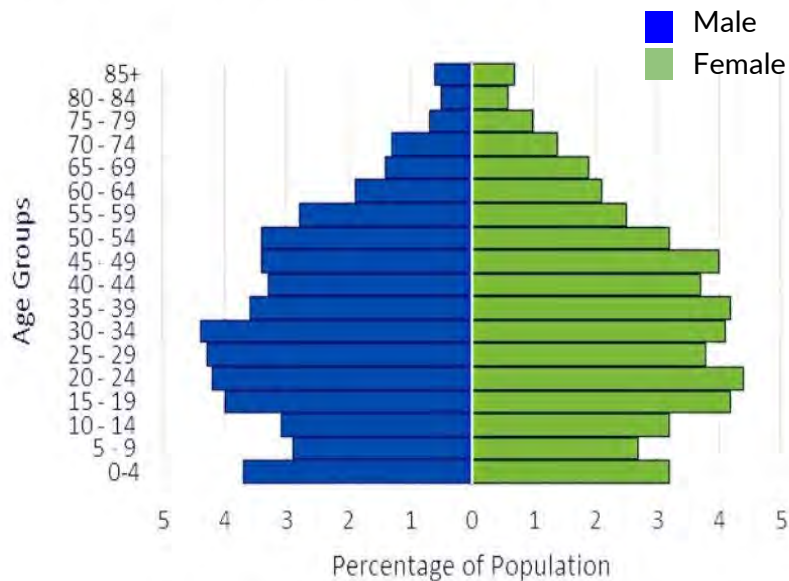
- 307,670 people (as of 2020 Census)
- 2010 to 2020 growth: 212,375 → 307,670, around **44.9%**
 - Among the fastest growth of California cities from 2010-2020



Irvine Demographics continued...

Age & Sex

AGE DISTRIBUTION PYRAMID



2020 5-Year American Community Survey Estimates
Table S0101 Age and Sex

- Median age: 33.8
- Large young - middle adult population
 - Population over 18 years: 77.5%
 - >210,000 are eligible to vote
- Male to female ratio: 96.8:100

Irvine Demographics continued...

Finances

Median earnings for full-time year-round workers, civilian population over 16:

Male: \$100,810 / Female: \$71,444

Poverty status in last 12 months: (out of population for whom poverty status is determined):

12.6% (~33,217 individuals) were below 100% of the poverty level*

Public financial assistance:

6.36%* (~3,894 minors) were living in family households with supplemental security income, cash public assistance income, or food stamps/SNAP in the last 12 months

Cool Irvine



Cool Irvine

COOL IRVINE
CREATING A CLIMATE-RESILIENT CITY



Since the start of the program in January 2022 to July 2022, Irvine has achieved the following:

- 60** Cool Blocks
- 191** Households
- 1,409** Actions Taken
- 2,084** Actions Pledged
- 602,297** Total Pounds of CO₂ Reduced
(Equivalent to taking 58 cars off the road for a year!)

28% Average Carbon Reduction Per Household
Goal: Carbon Neutrality by 2030!

Building a Climate Movement

Addis Ababa Amsterdam Beijing
Dhaka North Freetown Irvine Lima
Lisbon Metropolitan Area of Guadalajara
New York Pune Quezon City Quito Rencana
Rio de Janeiro São Paulo Seattle Seoul
Tokyo-Kuala Lumpur Wuhan

Congratulations to the
2022 C40 Cities Bloomberg
Philanthropies Awards Finalists
#UnitedInAction

Solarize Irvine



One Irvine



ONE IRVINE - FACT SHEET

In 2019, the City of Irvine embarked on a neighborhood revitalization initiative called **ONE IRVINE**. The goal of the program is to engage residents and stakeholders to spark long-lasting, community-led reinvestment and revitalization, and to eliminate code issues in the City's older neighborhoods. One Irvine is currently operating in the North El Camino Real neighborhood and will be adding more neighborhoods in the near future.

The program offers:



Green Home Grants



Home Improvement Loans



Permit Fee Holiday
(citywide)

Diversity, Equity, and Inclusion Committee

On January 26, 2021, the Irvine City Council passed the [resolution](#) reaffirming Irvine's commitment to diversity, equity, and inclusion

COMMITTEE FIVE FOCUS AREAS:

1. City employment
2. City contracting
3. Hate crimes/incidents
4. City's diversity campaign
5. Convention of the Elimination of All Forms of Discrimination Against Women (CEDAW)

RESOLUTIONS & INITIATIVES:

- Diversity, Equity, and Inclusion Resolution
- CEDAW Resolution
- We Are Irvine
- Reporting Hate Crimes and Hate Incidents

Future Goals

- Changing city fleet to electric
- Incentivizing electrification on appliances for residents
- Initiating city run public shuttle system

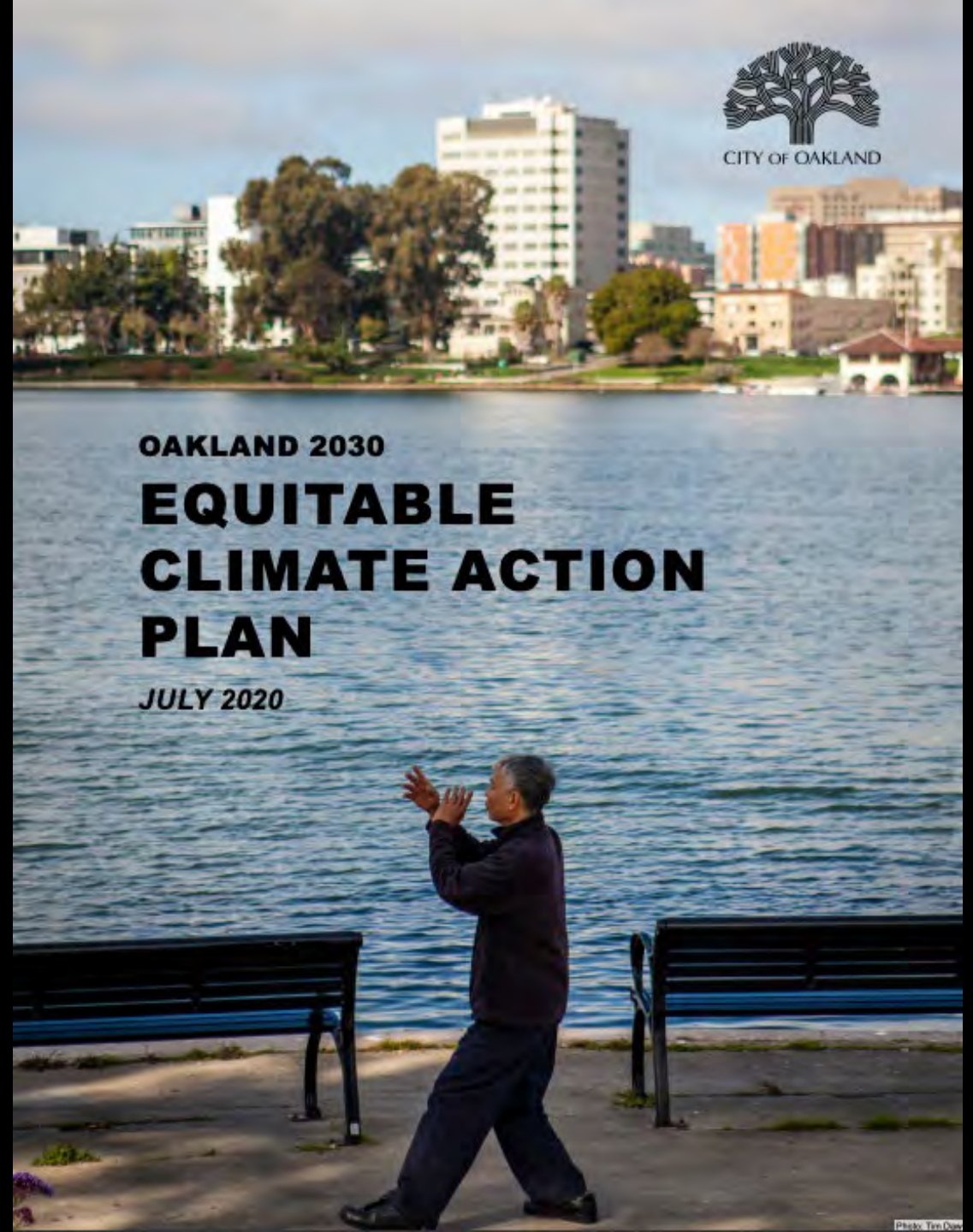


Equity and Resilience in the Equitable Climate Action Plan

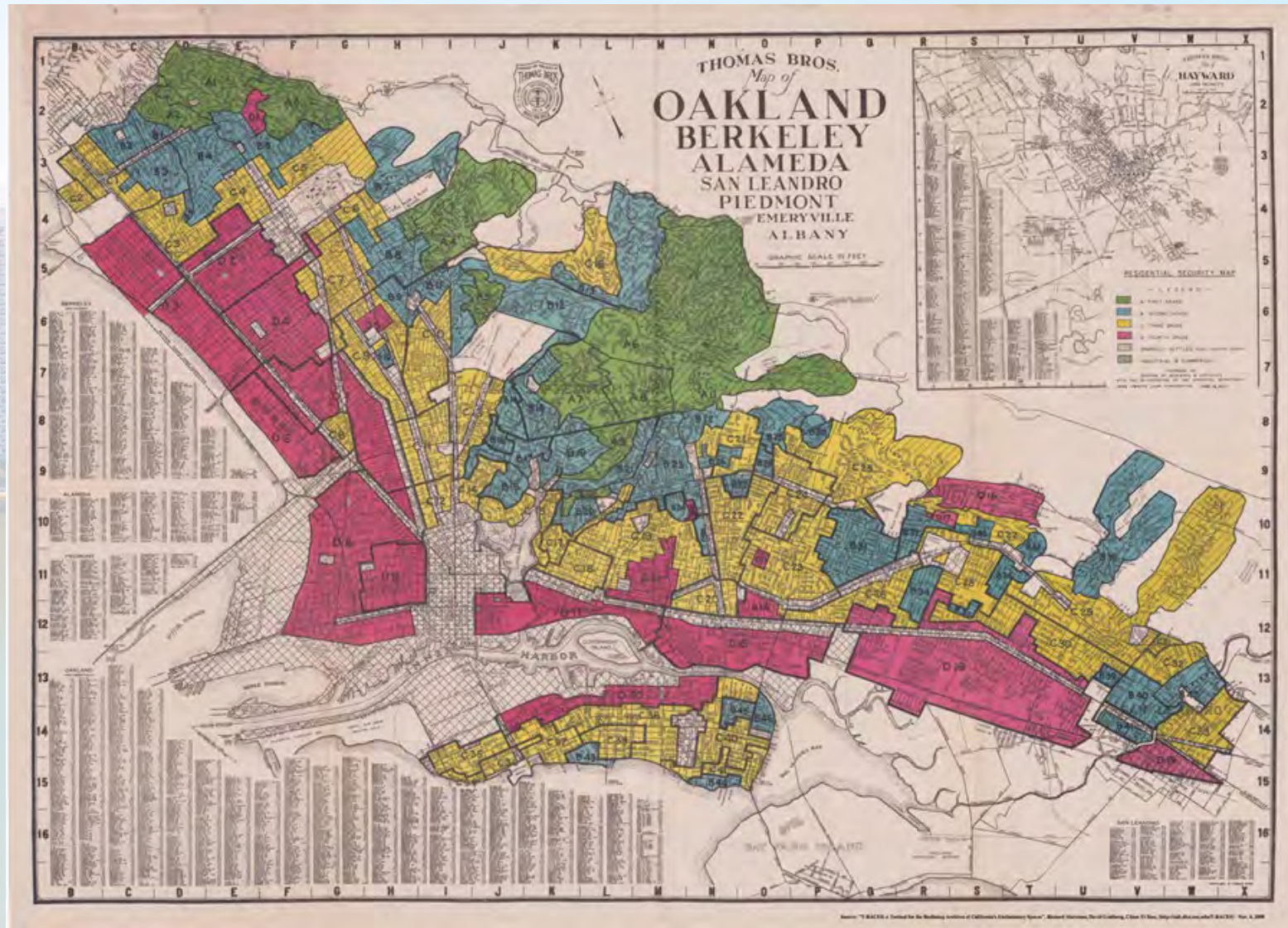
—
Joe DeVries
Chief Resilience Officer
City of Oakland



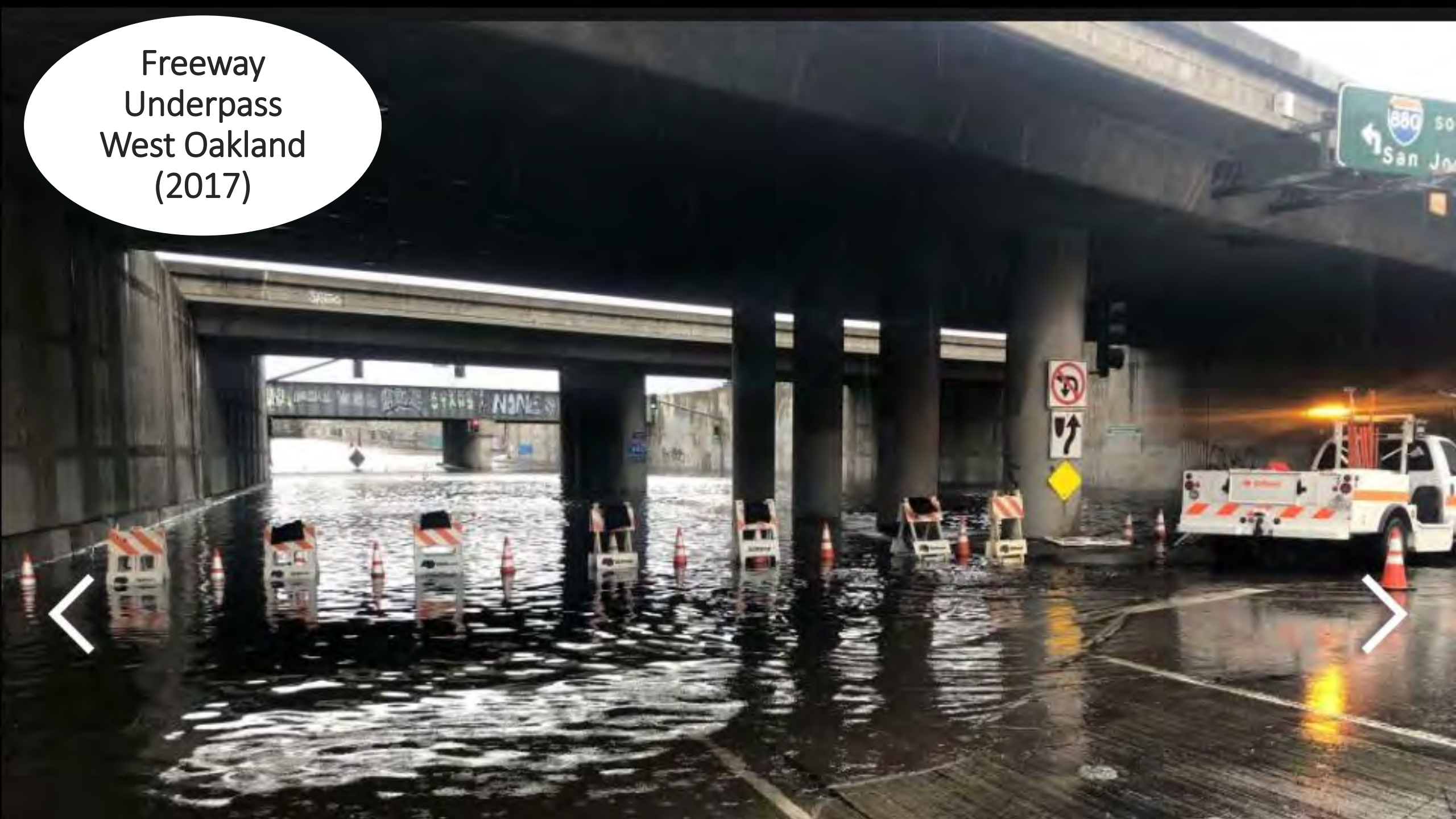
OAKLAND 2030
EQUITABLE
CLIMATE ACTION
PLAN
JULY 2020



The Legacy of Redlining and Environmental Injustice



Freeway
Underpass
West Oakland
(2017)



Climate Targets:

36 %

by 2020

60 %

by 2030

**CARBON
NEUTRAL**

by 2050

Compared to Local 2005 GHG Emissions

Social, Racial, & Economic Equity

Oakland's 2030 ECAP

How do we **STOP** Climate Change?

Local Emissions

Life Cycle Emissions

Carbon Removal

How do we **ADAPT** to Climate Change?

Resilient Infrastructure

Resilient Communities

Resilient Government

- 40 Actions Across 7 ECAP Sectors -

- Transportation & Land Use • Buildings • Material Consumption & Waste •
- Adaptation • Carbon Removal • City Leadership • Port Leadership •

ECAP Pillars:

- ✓ Equitable
- ✓ Ambitious
- ✓ Realistic
- ✓ Balanced
- ✓ Adaptive



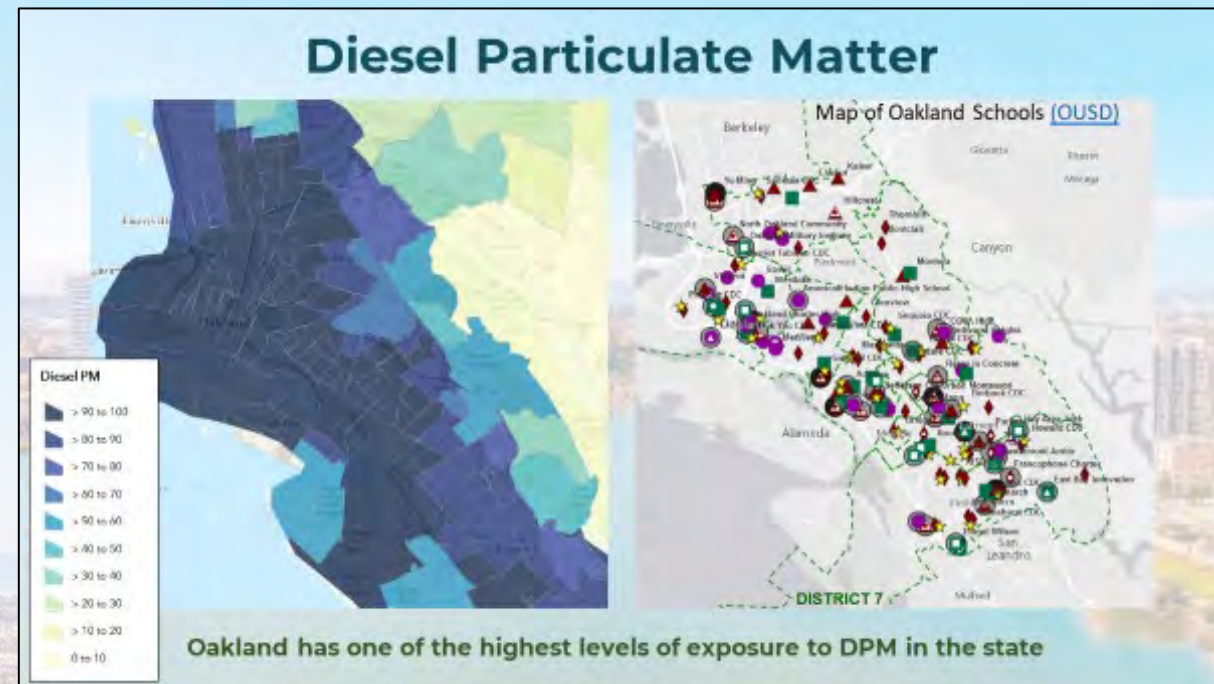
Developing the ECAP

- 8 Community Workshops
- Climate Equity Work Days
- Stakeholder meetings
- Pop-Up Engagement
- Online Survey
- Online portal
- Social media
- Online draft
- 2 Town Halls

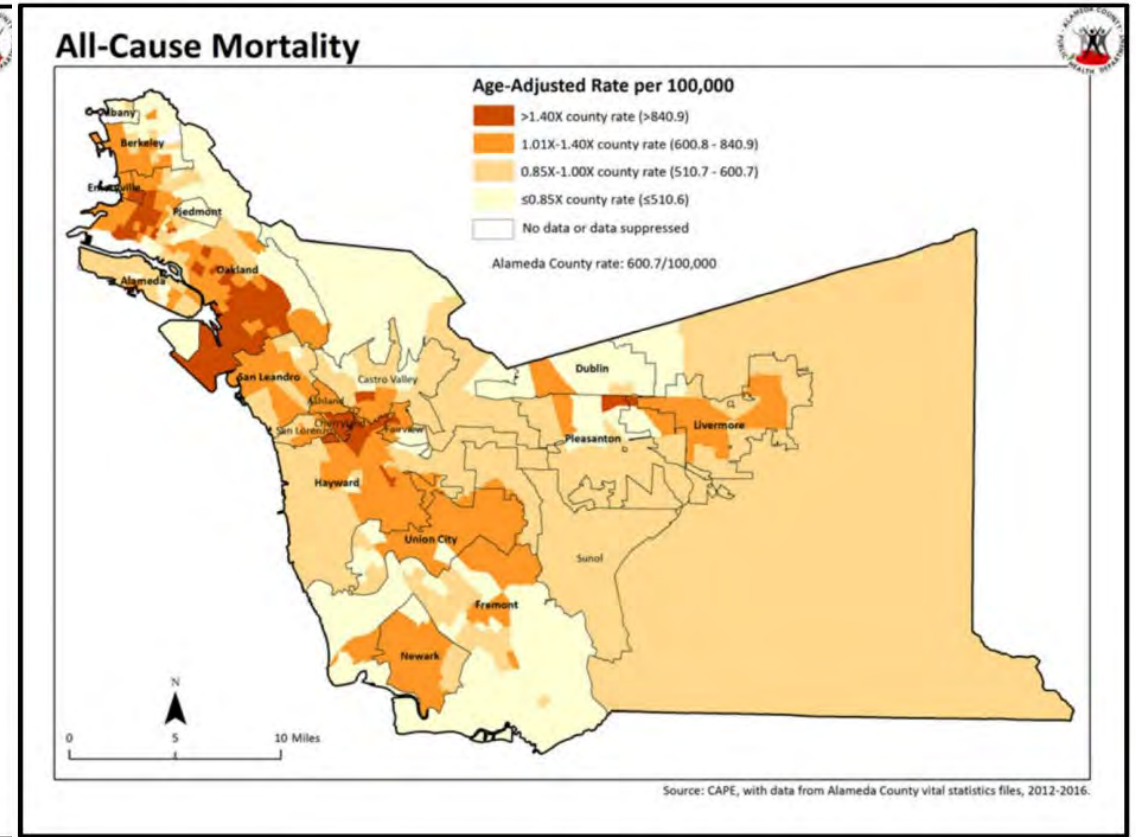
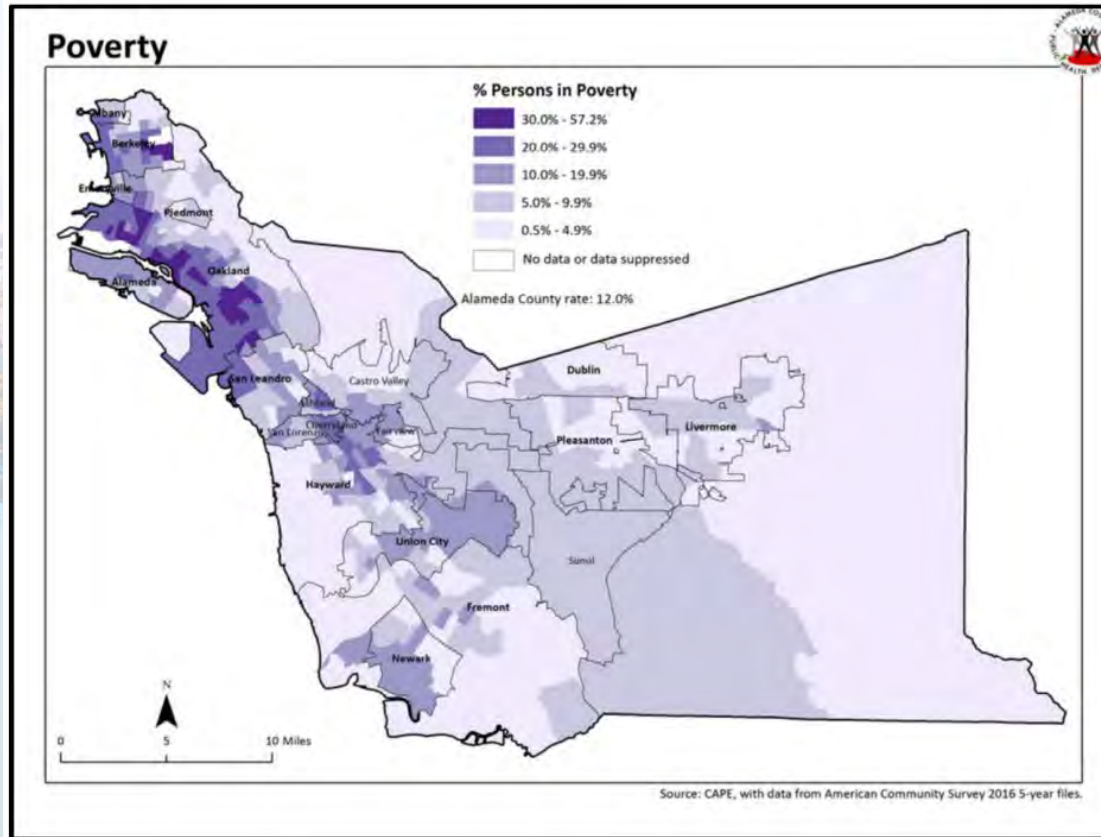


Leading with Equity:

- Data-Driven Analysis
- Iterative drafting with Equity Facilitator and Community Advisory Committee
- Oversight from Department of Race and Equity
- Preliminary Equity Screen
- Racial Equity Impact Assessment + Implementation Guide



Why Equity? A matter of Life and Death...



It doesn't happen without Community Leadership...



GRID Alternatives

ENVIRONMENTAL EQUITY MARCH 2018

MOBILITY EQUITY FRAMEWORK

Greenlining Institute

HOW TO MAKE TRANSPORTATION WORK FOR PEOPLE



Original Scrapper Bike Team



Food Shift

Resilience is...

- Health: Urban greening, respite from heat & smoke, mask distribution
- Engagement: Co-planning local implementation
- Good Jobs: A Just-Transition approach to electrification
- Housing Security: Upgrades without displacement
- Safety: Flood mitigation, reliable power, active mobility



Implementation Examples

- Resilience Hubs (W. Oakland, Lincoln Square, churches)
- General Plan, Economic Development Strategy Updates
- 50-Year Urban Forest Master Plan
- Sustainable Mobility & ZEV Action Plan
- Building Electrification Roadmap
- Composting & Waste Reduction
- E. Oakland “Better Neighborhoods Same Neighbors”
- Ongoing Engagement, Trust-Building, Collaboration



Thank you!

—
Joe DeVries

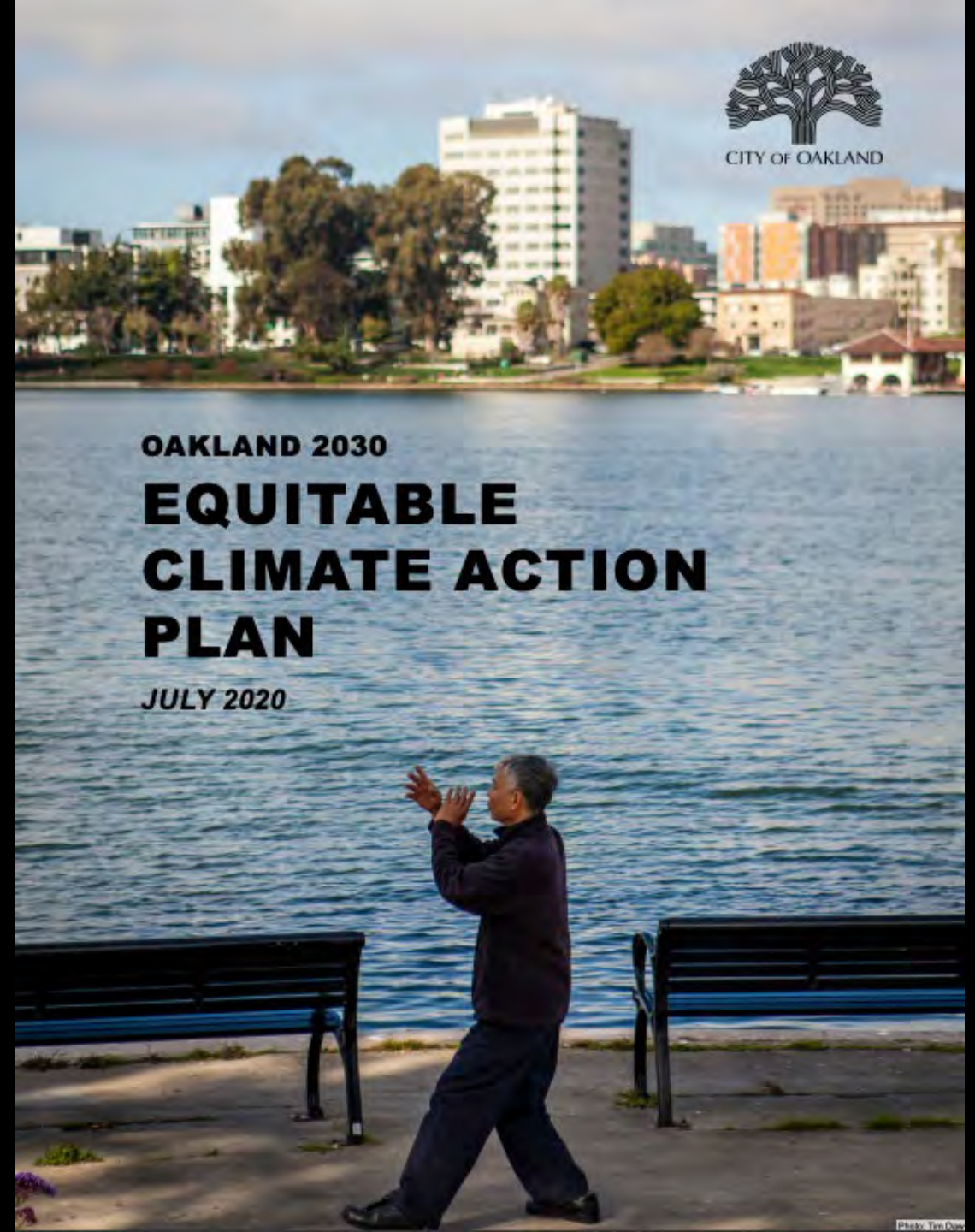
jdevries@oaklandca.gov



OAKLAND 2030

**EQUITABLE
CLIMATE ACTION
PLAN**

JULY 2020





Creating a More Equitable and Resilient Salinas

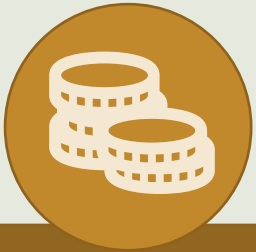
Mayor Kimbley Craig
City of Salinas



Salinas Demographics & Climate Change

- 79% Latino
- 71% Speak a Language Other than English at Home
- 17% Live in Poverty
- 19.3% Live in Overcrowded Conditions
- Monterey County Highest Food Insecurity in California

Disadvantaged groups are often disproportionately affected by climate change.



Reduced income levels



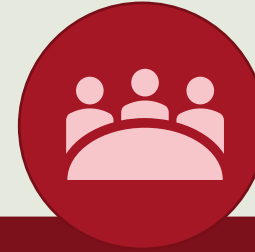
Language barriers



Health inequities



Housing constraints



Limited access to resources



Salinas' Equity Focus



General Fund

- \$6 M in Alisal
- \$1.5 M in Chinatown

American Rescue Act Investment

- \$10.5 M in Park & Rec Improvements
- \$12.6 M in Housing & Homeless

Equity as a Shared Value



Salinas' Vulnerability Assessment

- Significant risk of crop disruption
- Health impacts from extreme heat
 - Limited air conditioning can make the issue worse
- Increased valley fever risk
- Damage to river and creek ecosystems
- Sea level rise expected to harm groundwater
- Greater risk of energy disruption
- Air quality impacts from increases in regional wildfires





Equity & Resiliency in Practice



VISIÓN SALINAS 2040

General Plan – Underway

- ✓ Climate Action Plan
- ✓ Environmental Justice Element

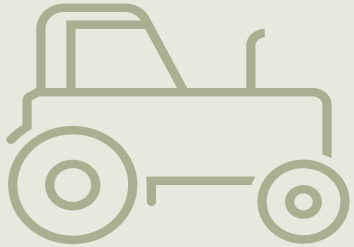


September - Sun Street Transfer Station to close in the Alisal to allow for Vibrancy Plan Implementation

Working Group Calendar Calendario de los Grupos de Trabajo		
 <p>Socioeconomic Systems Sistemas Socioeconómico</p>   <p>Next Meeting Próxima Junta 5/11 @ Firehouse 1330 E Alisal St. 6:00 - 8:00 PM</p> <p>6/8/22 TBD Será anunciado</p>	 <p>Natural Systems Sistemas Naturales</p>   <p>Next Meeting Próxima Junta 5/17 @ Firehouse 1330 E Alisal St. 6:00 - 8:00 PM</p> <p>6/16/22 TBD Será anunciado info: visionsalinas.org</p>	 <p>Built Environment Entorno Construido</p>   <p>Next Meeting Próxima Junta 5/19 @ Firehouse 1330 E Alisal St. 6:00 - 8:00 PM</p> <p>6/22/22 TBD Será anunciado</p>



Agriculture, Equity, & Resiliency



\$8 billion – industry, over 75,000 jobs

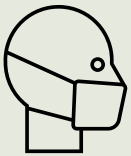
Climate Challenges



Drought and water sustainability, seawater intrusion



Agriculture pests and diseases



Health, safety, and housing of farmworkers

- \$250,000 in Sustainable Agricultural Lands Conversation Grant to include agriculture in General Plan
- Ongoing farmworker engagement
- Creation of First Regional Farmworker Housing Study and Action Plan

